



10,000m²

Company Profile And Culture

FINIO , INC. a professional enterprise engaged in the research, production, and sales of valves, sanitary ware, water meters, pipes, fittings, bathroom accessories, kitchen and bathroom hardware, etc.

The head office has multiple factories, branches and offices, covering a total area of 150 mu ,with a standardized workshop area of 100000 square meters, and currently employs more than 700 people.

The company advocates people-oriented, pragmatic, innovative, professional, and enterprising philosophy, focusing on the intelligent bathroom field, relying on high-quality research and development teams, high-end research and development laboratories, and focusing on product differentiation research and development, The company has successively passed ISO9001,CE,CQC and other product and enterprise management certifications, adhering to the spirit of diligence and dedication.and striving to create a first-class intelligent bathroom brand in China

BATHROOM HARDWARE SERIES



NINGBO FINIO SANITARY WARE CO.,LTD

OFFICE ADD:NO.218-26 WANGSHAN ROAD,JINGBEI DIST,NINGBO,CHINA 315000
 FACTORY ADD:NO.68,TONGHE EAST ROAD,ZHENHAI DIST,NINGBO,CHINA 315000
 TEL:+86-574-87151980 FAX:+86-574-87151980
 EMAIL:info@finio.cn WEB:www.finio.cn

可靠的质量保证 Reliable quality assurance

Finio has imported advanced material physical and chemical analysis equipment from Europe and the United States since 2001. It has purchased internationally-esteemed testing machines used for valves, faucets, hoses, durability, fluidity, tempt, tension and burst, metallographic analyzers, 58 sets of complete mechanical & physical testing equipment or checking assembly line, and 26 units of standard machines.

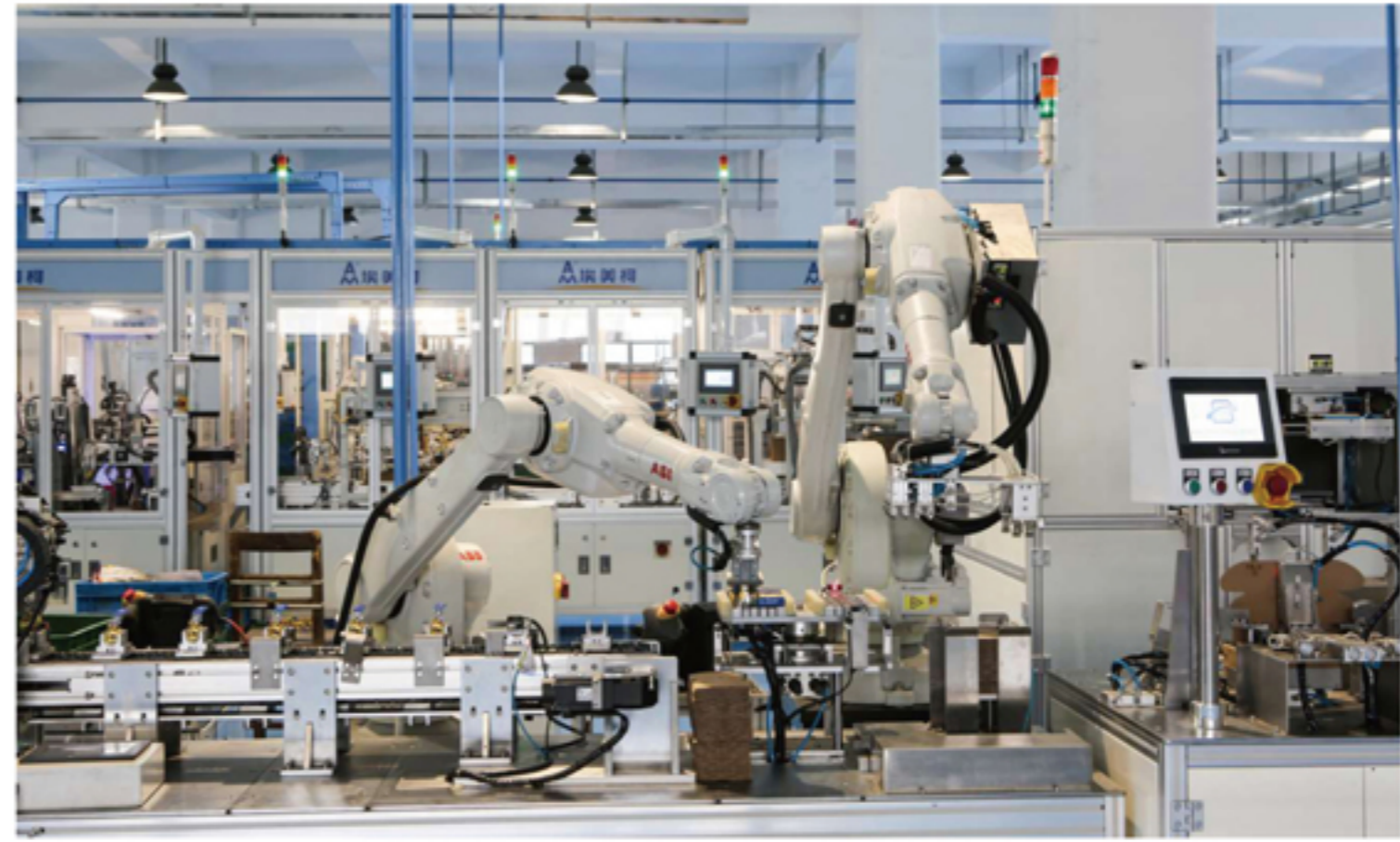
As early as the year of 1994, FINIO had acquired the ISO 9000 serial Certification for Quality Management System and strictly compiled the whole set of process control procedure documents in the process of material procurement, designing, manufacturing, performance testing, and packaging etc. In 2001, the Group not only obtained the ISO 9001 Certification for Quality Management System and the ISO 14001 Certification for Environmental Management System, but also acquired the Australian AS/NZS 3688, AS/NZS 3718, AS 5830.1, and EU's CE Quality Certification with 100% qualification ratio of ex-work products and 100% qualification ratio of export commodity inspection. In 2012, FINIO was acclaimed as the first batch of Demonstration Enterprise for Exports' Safety and Quality by Entry-exit Inspection & Quarantine Bureau of Ningbo City. In October 2010, FINIO's testing center was praised and accredited by China National Accreditation Service for Conformity Assessment, which is affirmation for FINIO's testing capability.



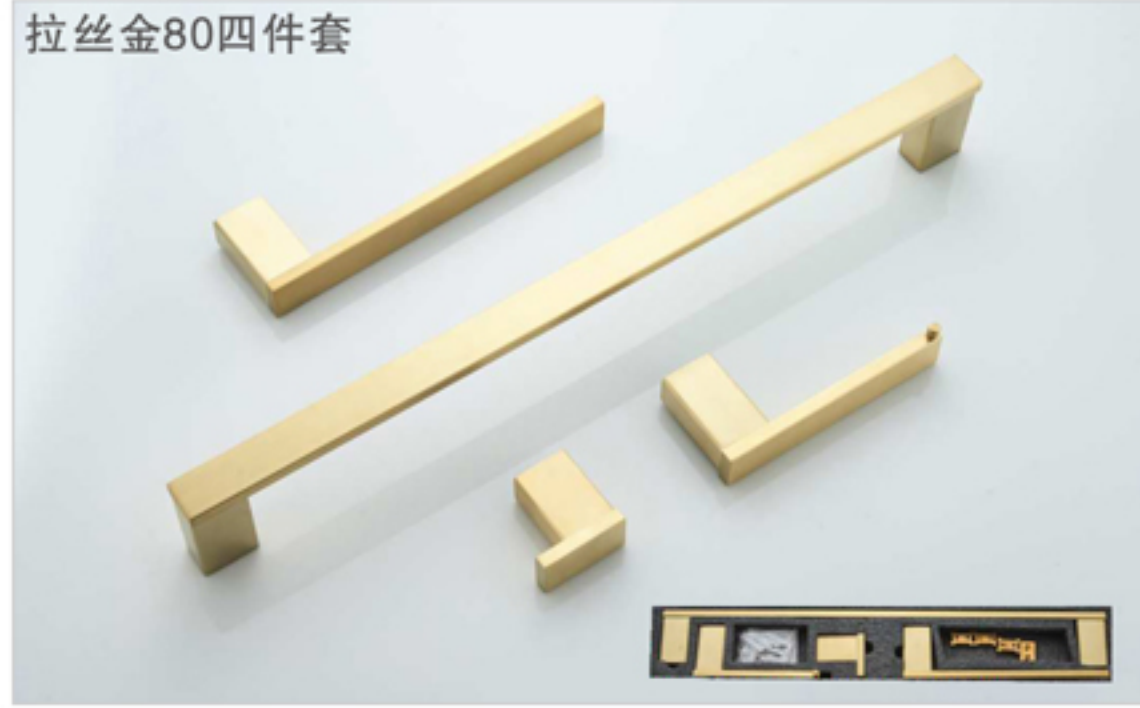
The first class equipments 一流的生产设备

"A handy tool makes a handy man", as it says, the integration management of Industrialization & Informatization, and Intellectualization Equipment can guarantee modern production requirements. Recently, FINIO strived to undertake the technology upgrading, including equipment investment and intelligent unmanned workshops, which preliminarily paved the way for large-scale Intellectualization.

In order to enlarge production, form industrial chains, and promote FINIO, the Modern Industrial Town was inaugurated in 2006. Meanwhile, we had invested a large sum of money in technical upgrading, which replaced old manufacturing equipments and changed into new production models. All these efforts facilitated industrial upgrading and restructuring in order to enhance our competitiveness.



拉丝金80四件套



黑色82四件套



拉丝金89四件套



黑色85四件套



拉丝金93四件套



黑色88四件套



专业 SUS 304 挂件



让时尚融入生活

精选SUS304不锈钢
304 STAINLESS STEEL IS SELECTED AS RAW MATERIAL





8003
单杆/Single pole



8004
化妆台/Dresser bar



8005
化妆台/Dresser bar



8006
衣钩/Clothes hook



8006A
双衣钩/Clothes hook



8007
皂碟/Soap dish



8008
单杯/Single cup



8007A
皂碟/Soap dish



8009
双杯/Double cup



8010
毛巾环/Towel ring



8011
厕纸架/Toilet paper rack



8012
马桶刷/Toilet brush



6065
厕纸架/Toilet paper rack

精选SUS304不锈钢
304 STAINLESS STEEL IS SELECTED AS RAW MATERIAL.



8001-C
毛巾架/Towel rack

01/02

8000/SERIES



8001
浴巾架/Towel rack



8001-A
毛巾架/Towel rack



8001-B
毛巾架/Towel rack



8002
双杆/Double rod

拉丝金
 镜面
 拉丝
 黑色
 白色
 枪灰
 Suit product series



8104
化妆台/Dresser bar



8106
衣钩/Clothes hook



8106A
双衣钩/ Clothes hook



8107
皂碟/ Soap dish



8108
单杯/Single cup



8111B
厕纸架/Toilet paper rack



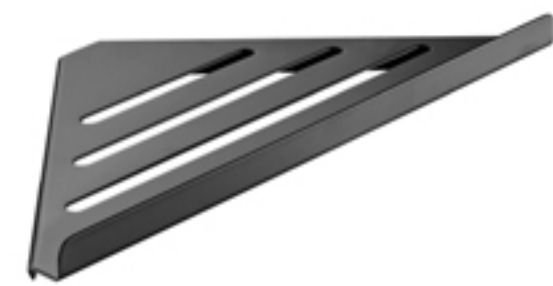
8111
厕纸架/Toilet paper rack



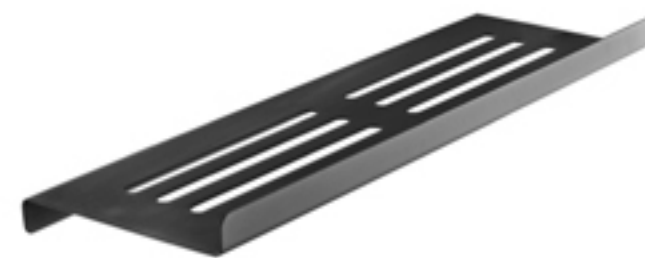
8111A
厕纸架/Toilet paper rack



8110
毛巾环/Towel ring



8116
板篮/Board basket



8117
板篮/Board basket



8112
马桶刷/ Toilet brush

精选SUS304不锈钢
304 STAINLESS STEEL IS SELECTED AS RAW MATERIAL



03/04

8100/SERIES



8101
浴巾架/Towel rack



8101A
毛巾架/Towel rack



8101B
浴巾架/Towel rack



8102
双杆/Double rod



8102A
双杆/Double rod



8103
单杆/Single pole

Suit product series
 拉丝金 镜面 拉丝 黑色 白色 枪灰
 Brushed gold Mirror color Brushed color black White Gun gray



8203
单杆/Single pole



8204
化妆台/Dresser bar



8205
化妆台/Dresser bar



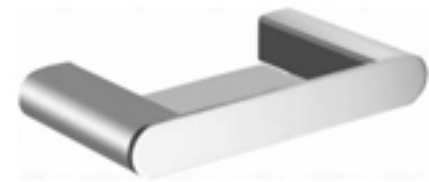
8206A
双衣钩/Clothes hook



8206
衣钩/Clothes hook



8207
皂碟/Soap dish



8207A
皂碟/Soap dish



8208
单杯/Single cup



8210
毛巾环/Towel ring



8211
厕纸架/Toilet paper rack



8212
马桶刷/Toilet brush



6065
厕纸架/Toilet paper rack

精选SUS304不锈钢
304 STAINLESS STEEL IS SELECTED AS RAW MATERIAL



05/06

8200/SERIES



8201
浴巾架/Towel rack



8201A
毛巾架/Towel rack



8201B
毛巾架/Towel rack



8202
双杆/Double rod

Suit product series
 拉丝金 镜面 拉丝 黑色 白色 枪灰
 Brushed gold Mirror color Brushed color black White Gun gray



8304
化妆台/Dresser bar



8305
化妆台带杆/Dresser bar



8306
衣钩/Clothes hook



8307
皂碟/Soap dish



8308
单杯/Single cup



8309
双杯/Double cup



8310
毛巾环/Towel ring



8311
厕纸架/Toilet paper rack



8312
马桶刷/Toilet brush



8313
吹风机架/Blower frame



8315
纸巾篓/Paper towel basket

精选SUS304不锈钢
304 STAINLESS STEEL IS SELECTED AS RAW MATERIAL



07/08

8300/SERIES



8301
浴巾架/Towel rack



8301A
毛巾架/Towel rack



8302
双杆/Double rod



8303
单杆/Single pole

Suit product series
 拉丝金 镜面 拉丝 黑色 白色 枪灰
 Brushed gold Mirror color Brushed color black White Gun gray



8402-A
双杆/Double rod



8403-A
单杆/Single pole



8404
化妆台/Dresser bar



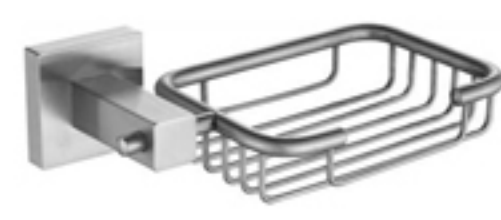
8406
衣钩/Clothes hook



8406-A
衣钩/Clothes hook



8407
皂碟/Soap dish



8407-A
皂网/Soaping net



8408
单杯/Single cup



8409
双杯/Double cup



8411-A
厕纸架/Toilet paper rack



8410-A
毛巾环/Towel ring



8414
皂液器/Soap dispenser



8411
厕纸架/Toilet paper rack



8410
毛巾环/Towel ring



8412
马桶刷/Toilet brush

精选SUS304不锈钢
304 STAINLESS STEEL IS SELECTED AS RAW MATERIAL.



09/10

8400/SERIES



8401
毛巾架/Towel rack



8402
双杆/Double rod

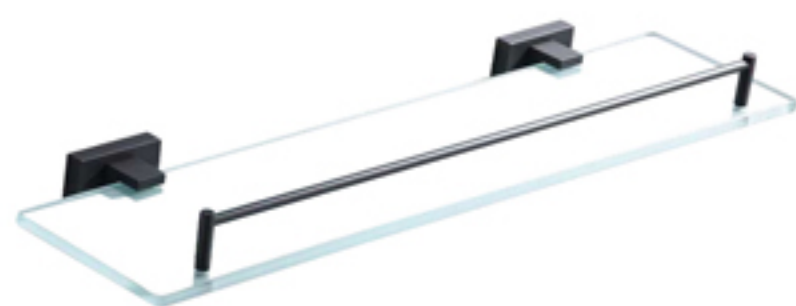


8401-A
毛巾架/Towel rack

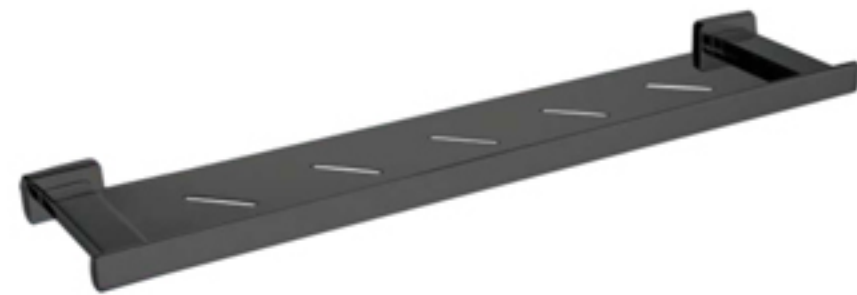


8403
单杆/Single pole

Suit product series
 拉丝金 Mirror color 拉丝 黑色 白色 枪灰



8504
化妆台/Dresser bar



8505
化妆台/Dresser bar



8506
衣钩/Clothes hook



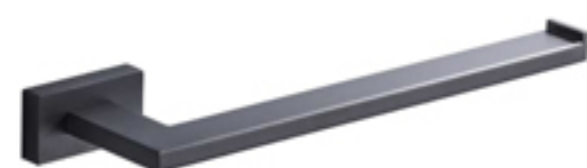
8506-A
双衣钩/Clothes hook



8507
皂碟/Soap dish



8508
单杯/Single cup



8510
毛巾环/Towel ring



8511
厕纸架/Toilet paper rack



8512
马桶刷/ Toilet brush



6065
厕纸架/Toilet paper rack



6066
厕纸架/Toilet paper rack

精选SUS304不锈钢
304 STAINLESS STEEL IS SELECTED AS RAW MATERIAL



11/12

8500/SERIES



8501
毛巾架/Towel rack



8501A
毛巾架/Towel rack



8502
双杆/Double rod



8503
单杆/Single pole

Suit product series
 拉丝金 镜面 拉丝 黑色 白色 枪灰
 Brushed gold Mirror color Brushed color black White Gun gray



8603
单杆/Single pole

8602
双杆/Double rod

8601
浴巾架/Towel rack



8604
化妆台/Dresser bar

8610
毛巾环/Towel ring

8611
厕纸架/Toilet paper rack



8606
衣钩/Clothes hook

8607
皂碟/Soap dish

8608
单杯/Single cup



6077
厕纸架/Toilet paper rack

6078
双厕纸架/Toilet paper rack

8612
马桶刷/Toilet brush

精选SUS304不锈钢
304 STAINLESS STEEL IS SELECTED AS RAW MATERIAL



13/14

8600/SERIES



8601A
毛巾架/Towel rack

8605
化妆台带杆/Dresser bar

Suit product series
 拉丝金 Brushed gold 镜面 Mirror color 拉丝 Brushed color 黑色 black 白色 White 枪灰 Gun gray



8704
化妆台/Dresser bar



8705
化妆台带杆/Dresser bar



8706
双衣钩/Clothes hook



8707
皂碟/Soap dish



8708
单杯/Single cup



8710
毛巾环/Towel ring



8711
厕纸架/Toilet paper rack



8713
厕纸架/Toilet paper rack



8712
马桶刷/Toilet brush



15/16
8700/SERIES



8701
浴巾架/Towel rack



8701A
毛巾架/Towel rack



8702
双杆/Double rod



8703
单杆/Single pole

精选SUS304不锈钢
304 STAINLESS STEEL IS SELECTED AS RAW MATERIAL

拉丝金
 镜面
 拉丝
 黑色
 白色
 枪灰
 Suit product series



8803
单杆/Single pole



8804
化妆台/Dresser bar



8805
化妆台带杆/Dresser bar



8806
衣钩/Clothes hook



8807
皂碟/Soap dish



8808
单杯/Single cup



8810
毛巾环/Towel ring



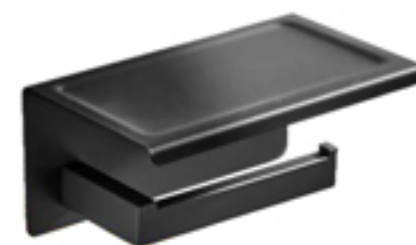
8811
厕纸架/Toilet paper rack



8811A
厕纸架/Toilet paper rack



8812
马桶刷/Toilet brush



6065
厕纸架/Toilet paper rack



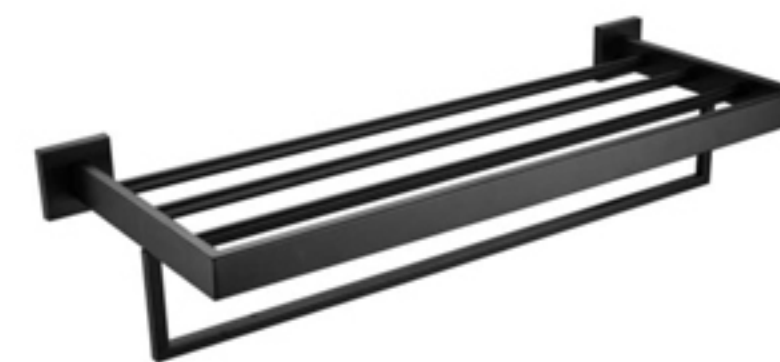
6066
双厕纸架/Toilet paper rack



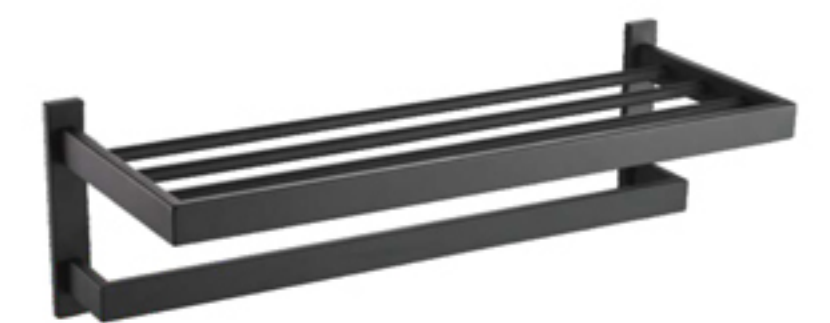
8801A
毛巾架/Towel rack

17/18

8800/SERIES



8801
毛巾架/Towel rack



8801B
毛巾架/Towel rack



8802
双杆/Double rod



8802A
双杆/Double rod

精选SUS304不锈钢
304 STAINLESS STEEL IS SELECTED AS RAW MATERIAL.

 拉丝金
 镜面
 拉丝
 黑色
 白色
 枪灰
 Suit product series



9003
单杆/Single pole



9004
化妆台/Dresser bar



9005
化妆台带杆/Dresser bar



9006
衣钩/Clothes hook



9006A
双衣钩/Clothes hook



9007
皂碟/Soap dish



9007A
皂碟/Soap dish



9008
单杯/Single cup



9010
毛巾环/Towel ring



9011
厕纸架/Toilet paper rack



9010A
毛巾环/Towel ring



6065
厕纸架/Toilet paper rack



9012
马桶刷/Toilet brush



19/20

9000/SERIES



9001
浴巾架/Towel rack



9001-A
毛巾架/Towel rack



9001-B
毛巾架/Towel rack



9002
双杆/Double rod

精选SUS304不锈钢
304 STAINLESS STEEL IS SELECTED AS RAW MATERIAL

Suit product series



9201
毛巾架/Towel rack

21/22

9200/SERIES



9206
双衣钩/Clothes hook



9207
皂碟/Soap dish



9208
单杯/Single cup



9202
双杆/Double rod



9203
单杆/Single pole



9210
毛巾环/Towel ring



9211
厕纸架/Toilet paper rack



9212
马桶刷/Toilet brush



9204
化妆台/Dresser bar



9210-A
毛巾环/Towel ring

精选SUS304不锈钢
304 STAINLESS STEEL IS SELECTED AS RAW MATERIAL.

Suit product series
 拉丝金 Brushed gold 镜面 Mirror color 拉丝 Brushed color 黑色 black 白色 White 枪灰 Gun gray

9100/SERIES



9101B
毛巾架/Towel rack



9101
浴巾架/Towel rack



9102
双杆/Double rod



9103
单杆/Single pole



9106
衣钩/Clothes hook



9107
皂碟/Soap dish



9108
单杯/Single cup



9111
厕纸架/Toilet paper rack



9110
毛巾环/Towel ring



9110-A
毛巾环/Towel ring



9112
马桶刷/Toilet brush



6077
厕纸架/Toilet paper rack

精选SUS304不锈钢
S04 STAINLESS STEEL IS SELECTED AS RAW MATERIAL.

9300/SERIES



9301
毛巾架/Towel rack



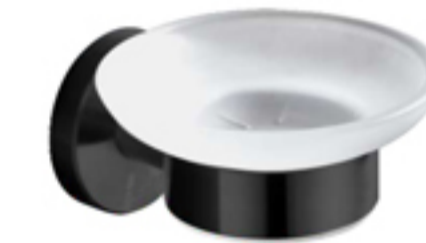
9302
双杆/Double rod



9303
单杆/Single pole



9306
衣钩/Clothes hook



9307
皂碟/Soap dish



9308
单杯/Single cup



9310
毛巾环/Towel ring



9310-A
毛巾环/Towel ring



9310-B
毛巾环/Towel ring



9310-C
毛巾环/Towel ring



9311
厕纸架/Toilet paper rack



9311A
厕纸架/Toilet paper rack



9311-B
厕纸架/Toilet paper rack



9312
马桶刷/Toilet brush

Suit product series
 拉丝金 Brushed gold 镜面 Mirror color 拉丝 Brushed color 黑色 black 白色 White 枪灰 Gun gray

9500/SERIES



9501
毛巾架/Towel rack



9501A
毛巾架/Towel rack



9502
双杆/Double rod



9503
单杆/Single pole



9506
衣钩/Clothes hook



9507
皂碟/Soap dish



9508
单杯/Single cup



9510
毛巾环/Towel ring



9510-A
毛巾环/Towel ring



9511
厕纸架/Toilet paper rack



9511-A
厕纸架/Toilet paper rack



9512
马桶刷/Toilet brush

精选SUS304不锈钢
S304 STAINLESS STEEL IS SELECTED AS RAW MATERIAL.



9604
化妆台/Dresser bar

25/26

9600/SERIES



9603
单杆/Single pole



9606
衣钩/Clothes hook



9607
皂碟/Soap dish



9608
单杯/Single cup

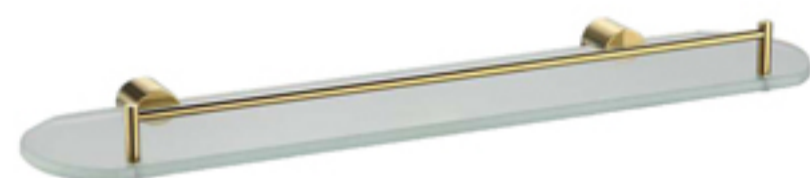


9610
毛巾环/Towel ring



9611
厕纸架/Toilet paper rack

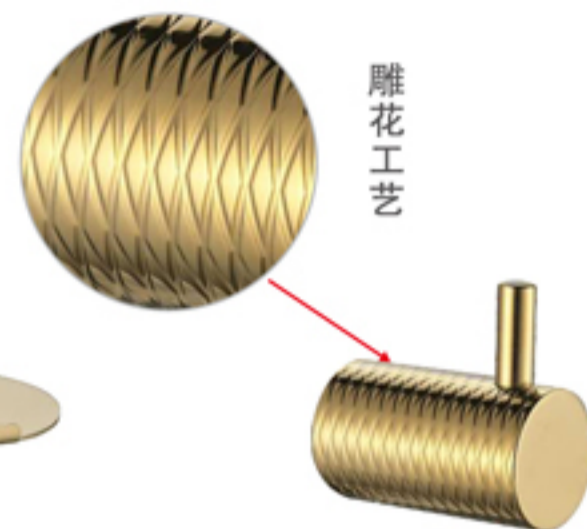
Suit product series
 拉丝金 Brushed gold 镜面 Mirror color 拉丝 Brushed color 黑色 black 白色 White 枪灰 Gun gray



9704
化妆台/Dresser bar



9705
化妆台/Dresser bar



9706
衣钩/Clothes hook



9707
皂碟/Soap dish



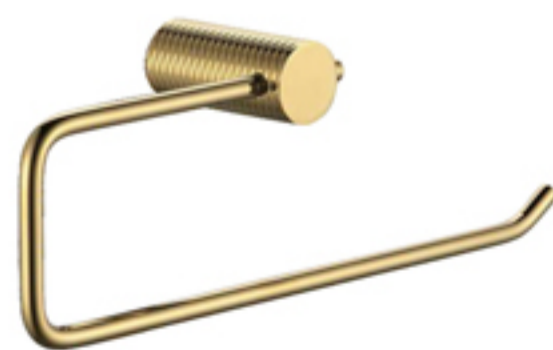
9707A
皂碟/Soap dish



9708
单杯/Single cup



9711
厕纸架/Toilet paper rack



9710
毛巾环/Towel ring



9712
马桶刷/Toilet brush

精选SUS304不锈钢
S304 STAINLESS STEEL IS SELECTED AS RAW MATERIAL.



27/28

9700/SERIES



9701A
毛巾架/Towel rack



9703
单杆/Single pole



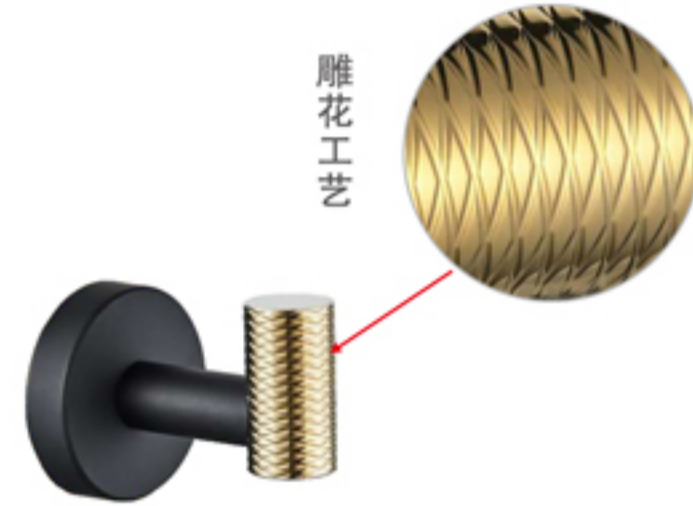
9701
浴巾架/Towel rack



9702
双杆/Double rod



9806A
双衣钩/Clothes hook



9806
衣钩/Clothes hook



9807
皂碟/Soap dish



9808
单杯/Single cup



9810
毛巾环/Towel ring



9811
厕纸架/Toilet paper rack



9812
马桶刷/Toilet brush



9813
厕纸架/Toilet paper rack



9810A
毛巾环/Towel ring



9804
化妆台/Dresser bar



9801
毛巾架/Towel rack



9803
单杆/Single pole



9802
双杆/Double rod



9906A
双衣钩/Clothes hook



9905
衣钩/Clothes hook



9906
双衣钩/Clothes hook



9908
单杯/Single cup



9907
皂碟/Soap dish



9911
厕纸架/Toilet paper rack



9910
毛巾环/Towel ring



9910A
毛巾环/Towel ring



9865
厕纸架/Toilet paper rack



9912
马桶刷/Toilet brush



31/32

9900/SERIES



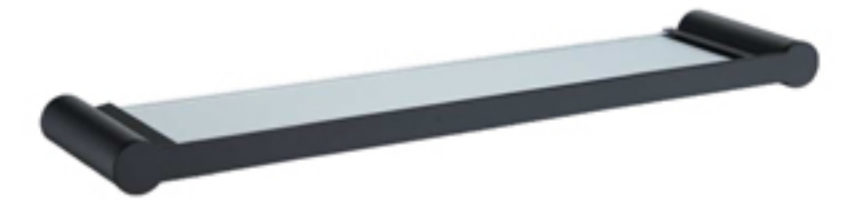
9901
毛巾架/Towel rack



9902
双杆/Double rod



9903
单杆/Single pole



9904
化妆台/Dresser bar

精选SUS304不锈钢
SUS304 STAINLESS STEEL IS SELECTED AS RAW MATERIAL.

Suit product series
 拉丝金 Brushed gold 镜面 Mirror color 拉丝 Brushed color 黑色 black 白色 White 枪灰 Gun gray



1206
双衣钩/Clothes hook



1206A
双衣钩/Clothes hook



1205
衣钩/Clothes hook



1207
皂碟/Soap dish



1207A
皂网/Soap net



1208
单杯/Single cup



1209
双杯/Double cup



1210
毛巾环/Towel ring



1210-A
毛巾环/Towel ring



1211
厕纸架/Toilet paper rack



1211-A
厕纸架/Toilet paper rack



1212
马桶刷/Toilet brush



1214
皂液器/Soap dispenser



1215
纸巾篓/Paper towel basket



1202
双杆/Double rod

33/34

1200/SERIES



1201
毛巾架/Towel rack



1201-A
毛巾架/Towel rack



1203
单杆/Single pole



1204
化妆台/Dresser bar

精选SUS304不锈钢
SUS304 STAINLESS STEEL IS SELECTED AS RAW MATERIAL.

Suit product series
 拉丝金 Brushed gold 镜面 Mirror color 拉丝 Brushed color 黑色 black 白色 White 枪灰 Gun gray



1307
皂碟/Soap dish



1307-B
皂碟/Soap dish



1308
单杯/Single cup



1308-B
单杯/Single cup



1301
毛巾架/Towel rack



1301-A
毛巾架/Towel rack



1307A
皂网/Soap net



1309
双杯/Double cup



1310-B
毛巾环/Towel ring



1310
毛巾环/Towel ring



1301-B
毛巾架/Towel rack



1302
双杆/Double rod



1303
单杆/Single pole



1310-A
毛巾环/Towel ring



1311
厕纸架/Toilet paper rack



1311-B
厕纸架/Toilet paper rack



1311-A
厕纸架/Toilet paper rack



1304
化妆台/Dresser bar



1319
厕纸架/Toilet paper rack



1320
毛巾环/Towel ring



1310C
毛巾环/Towel ring



1312
马桶刷/Toilet brush



1312-A
马桶刷/Toilet brush



1314
皂液器/Soap dispenser



1314-A
皂液器/Soap dispenser



1315
纸巾篓/Paper towel basket



1305
衣钩/Clothes hook



1306A
双衣钩/Clothes hook



1306
双衣钩/Clothes hook



1321
厕纸架/Toilet paper rack

1400/SERIES



1401-A
毛巾架/Towel rack



1402
双杆/Double rod



1403
单杆/Single pole



1404
化妆台/Dresser bar



1405
衣钩/Clothes hook



1406
双衣钩/Clothes hook



1407A
皂网/Soaping net



1408
单杯/Single cup



1407
皂碟/Soap dish



1411
厕纸架/Toilet paper rack



1410
毛巾环/Towel ring



1412
马桶刷/Toilet brush

1500/SERIES



1501-A
毛巾架/Towel rack



1502
双杆/Double rod



1503
单杆/Single pole



1504
化妆台/Dresser bar



1506
衣钩/Clothes hook



1507
皂碟/Soap dish



1507A
皂网/Soaping net



1508
单杯/Single cup



1510
毛巾环/Towel ring



1511A
厕纸架/Toilet paper rack



1511
厕纸架/Toilet paper rack



1512
马桶刷/Toilet brush

8900/SERIES



8903
单杆/Single pole



8906
双衣钩/Clothes hook



8910
毛巾环/Towel ring



8911
厕纸架/Toilet paper rack

1700/SERIES



1703
单杆/Single pole



1706
双衣钩/Clothes hook



1710
毛巾环/Towel ring



1711
厕纸架/Toilet paper rack

精选SUS304不锈钢
SUS304 STAINLESS STEEL IS SELECTED AS RAW MATERIAL.

39/40

1800/SERIES



1803
单杆/Single pole



1810
毛巾环/Towel ring



1811
厕纸架/Toilet paper rack



1806
双衣钩/Clothes hook

1900/SERIES



1903
单杆/Single pole



1906
衣钩/Clothes hook



1910
毛巾环/Towel ring



1911
厕纸架/Toilet paper rack



Suit product series



2004
化妆台/Dresser bar



2005
化妆台带杆/Dresser bar



2004A
化妆台/Dresser bar



2006
衣钩/Clothes hook



2007
皂碟/Soap dish



2007-A
皂网/Soaping net



2008
单杯/Single cup



2009
双杯/Double cup



2010
毛巾环/Towel ring



2011
厕纸架/Toilet paper rack



2010-A
毛巾环/Towel ring



2011-A
伸缩纸巾架/
Telescopic paper towel rack

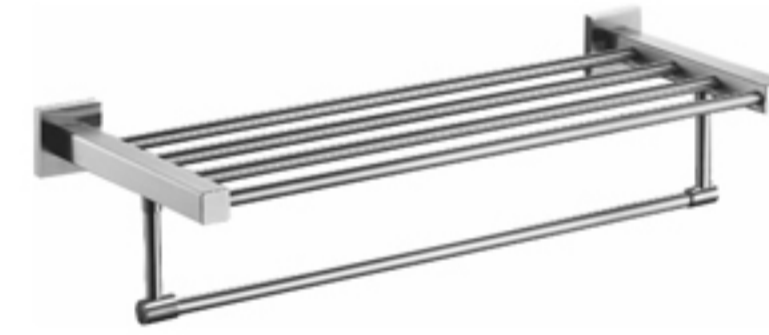


2012
马桶刷/Toilet brush

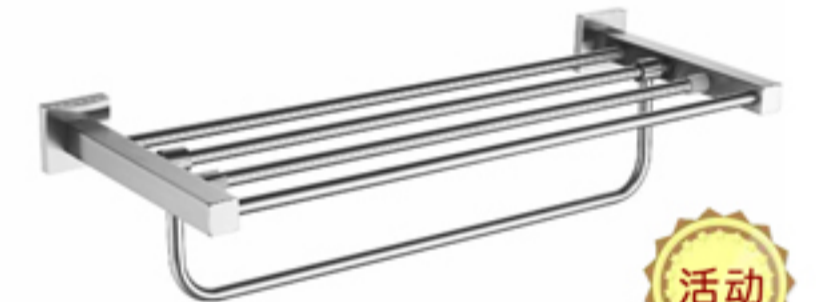


41/42

2000/SERIES



2001
毛巾架/Towel rack



2001-A
毛巾架/Towel rack



2002
双杆/Double rod



2002-A
双杆/Double rod



2003
单杆/Single pole

精选SUS304不锈钢
SUS304 STAINLESS STEEL IS SELECTED AS RAW MATERIAL.

Suit product series
 拉丝金 Brushed gold 镜面 Mirror color 拉丝 Brushed color 黑色 black 白色 White 枪灰 Gun gray



3001
浴巾架/Towel rack



3001A
毛巾架/Towel rack



3001-B
毛巾架/Towel rack



3002
双杆/Double rod



3013
活动双杆/Double rod



3003
单杆/Single pole



3004
化妆台/Dresser bar



3005
化妆台带杆/Dresser bar



43/44

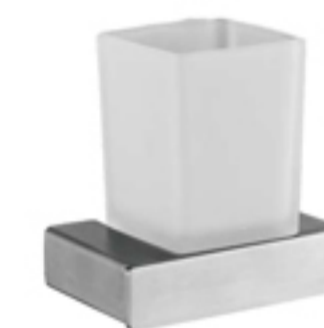
3000/SERIES



3006
衣钩/Clothes hook



3007
皂碟/Soap dish



3008
单杯/Single cup



3010
毛巾环/Towel ring



3011
厕纸架/Toilet paper rack



3012
马桶刷/Toilet brush

精选SUS304不锈钢
S04 STAINLESS STEEL IS SELECTED AS RAW MATERIAL.

Suit product series

 拉丝金 Brushed gold 镜面 Mirror color 拉丝 Brushed color 黑色 black 白色 White 枪灰 Gun gray



5004
化妆台/Dresser bar



5006
衣钩/Clothes hook



5007
皂碟/Soap dish



5008
单杯/Single cup



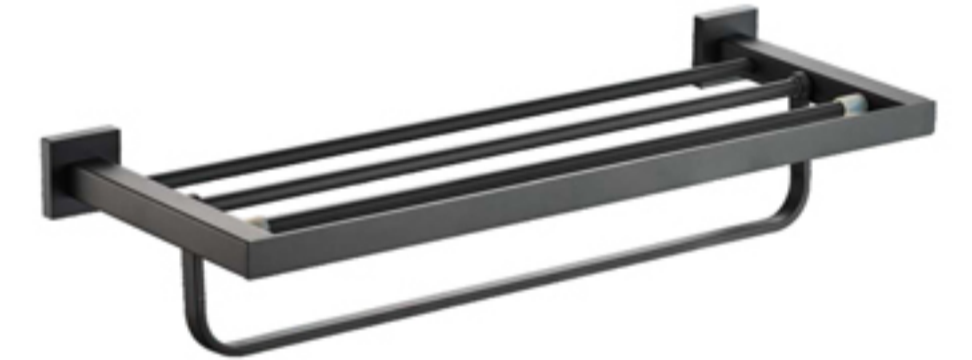
5010
毛巾环/Towel ring



5011
厕纸架/Toilet paper rack



5001
毛巾架/Towel rack



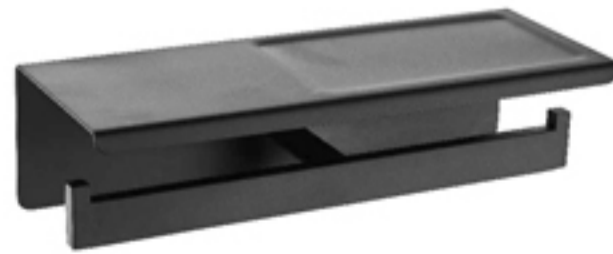
5001-A
毛巾架/Towel rack



5012
马桶刷/Toilet brush



6065
厕纸架/Toilet paper rack



6066
双厕纸架/Toilet paper rack



5002
双杆/Double rod



5003
单杆/Single pole



45/46

5000/SERIES



6004
化妆台/Dresser bar



6004A
化妆台带杆/Dresser bar



6005
化妆台带杆/Dresser bar



6006
衣钩/Clothes hook



6006A
双衣钩/Clothes hook



6007
皂碟/Soap dish



6007A
皂网/Soap net



6008
单杯/Single cup



6009
双杯/Double cup



6010
毛巾环/Towel ring



6010A
毛巾环/Towel ring



6011
厕纸架/Toilet paper rack



6011A
厕纸架/Toilet paper rack



6012
马桶刷/Toilet brush



6015
纸巾篓/Paper towel basket

精选SUS304不锈钢
S4 STAINLESS STEEL IS SELECTED AS RAW MATERIAL.



6001
毛巾架/Towel rack



6001-A
毛巾架/Towel rack



6001B
毛巾架/Towel rack



6001C
毛巾架/Towel rack



6002
双杆/Double rod



6003
单杆/Single pole

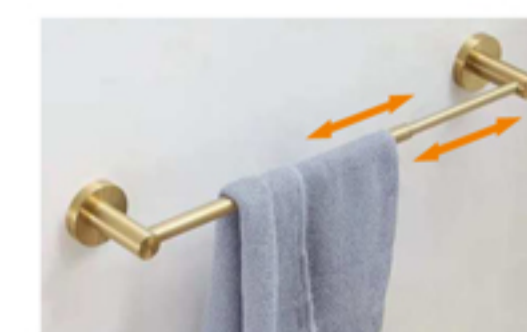


6002B
双杆/Double rod



6002C
双杆/Double rod

伸缩 40-65cm



伸缩 40-65cm

6003A
单杆/Single pole



6508
单杯/Single cup



6508A
单杯带钩/Single cup with hook



6507
皂碟/Soap dish



6507A
单碟带钩/Single disc with hook



6509
杯碟双用/Cup and saucer dual use



6502
双毛巾环带排钩/Double towel loop with row hook



6506
双衣钩/Clothes hook



6511 (原6111)
毛巾环带排钩/Towel ring with row hook



6519
厕纸架/Toilet paper rack



6520
马桶刷/Toilet brush



6521
马桶刷带杯/Toilet brush with cup



6501A
毛巾架/Towel rack

49/50

6500/SERIES



6501
毛巾架/Towel rack



6501B(原6075)
活动毛巾架/Movable towel rack



6512
毛巾环带单钩/Towel ring with row hook



6513
活动杆/Active double pole



6515
活动双杆/Active double pole



6516
活动三杆/Active double pole



6517
活动四杆/Four strokes



6518
活动五杆/Active five strokes

6600/SERIES



6603
单杆/Single pole



6606
衣钩/Clothes hook



6610
毛巾环/Towel ring



6611
厕纸架/Toilet paper rack

精选SUS304不锈钢
S304 STAINLESS STEEL IS SELECTED AS RAW MATERIAL.

6700/SERIES



6701A
毛巾架/Towel rack



6701
浴巾架/Towel rack



6703
单杆/Single pole



6704
化妆台/Dresser bar



6702
双杆/Double rod



6705
化妆台/Dresser bar



6706
衣钩/Clothes hook



6707
皂碟/Soap dish



6707A
皂碟/Soap dish



6708
单杯/Single cup



6711
厕纸架/Toilet paper rack



6710
毛巾环/Towel ring



6712
马桶刷/Toilet brush



7003
单杆/Single pole



7004
化妆台/Dresser bar



7005
化妆台带杆/Dresser bar



7006
双衣钩/Clothes hook



7006A
双衣钩/Clothes hook



7007
皂碟/Soap dish



7008
单杯/Single cup



7009
双杯/Double cup



7010
活动毛巾环/Towel ring



7010A
毛巾环/Towel ring



7011
活动厕纸架/Toilet paper rack



7011A
厕纸架/Toilet paper rack



7012
马桶刷/Toilet brush



7013
厕纸架/Toilet paper rack

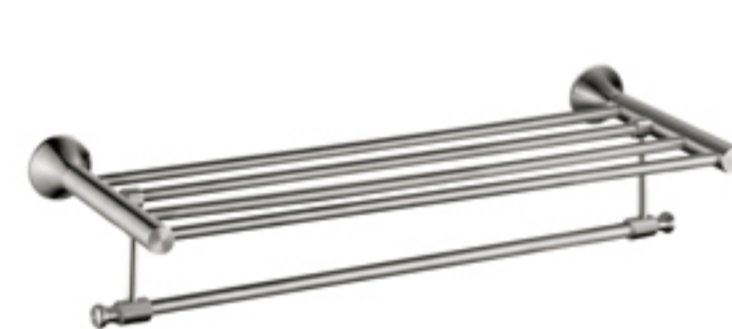


7014
毛巾环/Towel ring

精选SUS304不锈钢
SUS304 STAINLESS STEEL IS SELECTED AS RAW MATERIAL.



53/54
7000/SERIES



7001
毛巾架/Towel rack



7001-A
毛巾架/Towel rack



7001B
毛巾架/Towel rack



7002
活动双杆/Double rod



7002-A
双杆/Double rod



7002-B
双杆/Double rod

Suit product series
 拉丝金 Brushed gold 镜面 Mirror color 拉丝 Brushed color 黑色 black 白色 White 枪灰 Gun gray

6800/SERIES



6803
单杆/Single pole



6810
毛巾环/Towel ring



6806
双衣钩/Clothes hook



6807
皂碟/Soap dish



6808
单杯/Single cup



6811
厕纸架/Toilet paper rack



6811A
双厕纸架/Toilet paper rack



6812
马桶刷/Toilet brush

精选SUS304不锈钢
S304 STAINLESS STEEL IS SELECTED AS RAW MATERIAL.

55/56



6141
落地厕纸架/
Floor toilet paper holder



6142
落地厕纸架马桶刷/
Floor toilet paper holder toilet brush



6143
落地厕纸架/
Floor toilet paper holder



6144
落地厕纸架马桶刷/
Floor toilet paper holder toilet brush

 拉丝金
 镜面
 拉丝
 黑色
 白色
 枪灰
 Suit product series



6138
落地厕纸架/
Floor toilet paper holder



6127
伸缩固定落地纸巾架/
Telescopic fixed floor paper towel rack



6128
固定落地纸巾架/
Fixed floor-to-ceiling tissue rack



6129
活动落地纸巾架/
Activity floor tissue rack



6130
伸缩活动落地纸巾架/
retractable floor towel holder



6131
落地厕纸架/
Floor toilet paper holder



6132
活动落地纸巾架/
Activity floor tissue rack



6133
活动落地纸巾架/
Activity floor tissue rack



6134
落地厕纸架/
Floor toilet paper holder



6135
固定落地纸巾架/
Fixed floor-to-ceiling tissue rack



6135A
活动落地纸巾架/
Activity floor tissue rack



6136
伸缩活动落地纸巾架/
retractable floor towel holder



6137
活动落地纸巾架/
Activity floor tissue rack



6139
升降落地纸巾架/
Lifting floor paper towel rack



6140
落地纸巾架马桶刷/
Floor Towel Holder Toilet Brush



6145
落地纸巾架马桶刷/
Floor Towel Holder Toilet Brush



6146
活动落地纸巾架/
Activity floor tissue rack



6147
落地厕纸架/
Floor toilet paper holder



6148
落地双弯毛巾环/
Floor double bend towel ring



6149
落地厕纸架/
Floor toilet paper holder



6150
桌面毛巾环/
Desktop towel rack



6151
桌面毛巾环/
Desktop towel rack



6152
桌面毛巾环/
Desktop towel rack



6153
单杆桌面毛巾环/
Desktop towel rack



6154
双杆桌面毛巾环/
Desktop towel rack



6155
桌面毛巾环/
Desktop towel rack



6156
桌面首饰架/
Desktop jewelry rack



6122
落地厕纸架/
Floor toilet paper holder



6123
落地毛巾环/
Floor towel ring



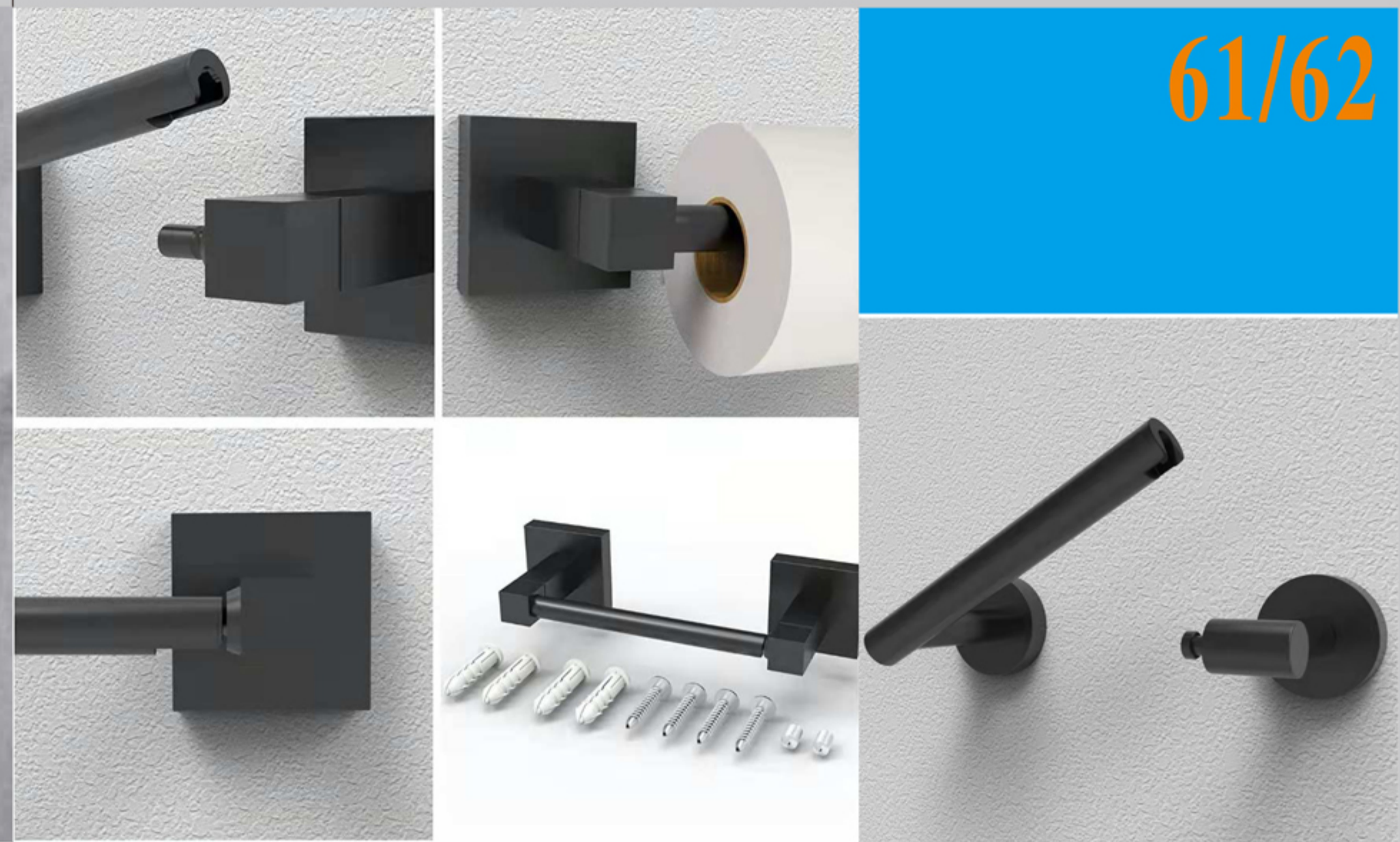
6125
双落地毛巾环/
Double floor towel ring



6126
双落地毛巾环/
Double floor towel ring



6086
双厕纸架/Toilet paper rack



125 200mm
单厕纸架/Toilet paper rack



6083
置物架/shelf



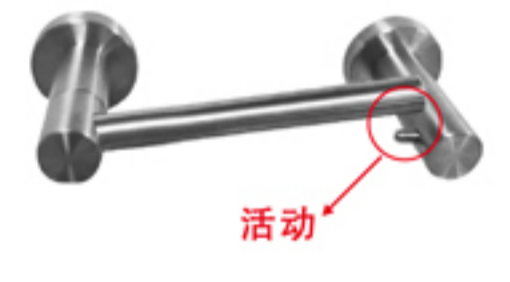
6085
单厕纸架/Toilet paper rack



109
厕纸架/Toilet paper rack



110
厕纸架/Toilet paper rack



111
厕纸架/Toilet paper rack



6065
厕纸架/Toilet paper rack



6066
双厕纸架/Toilet paper rack



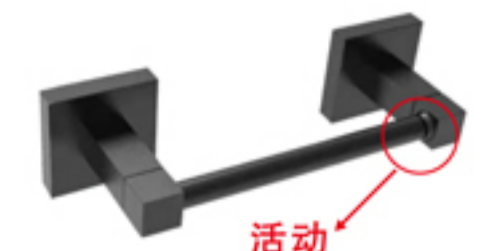
6078
双厕纸架/Toilet paper rack



112
厕纸架/Toilet paper rack



113
厕纸架/Toilet paper rack



114
厕纸架/Toilet paper rack

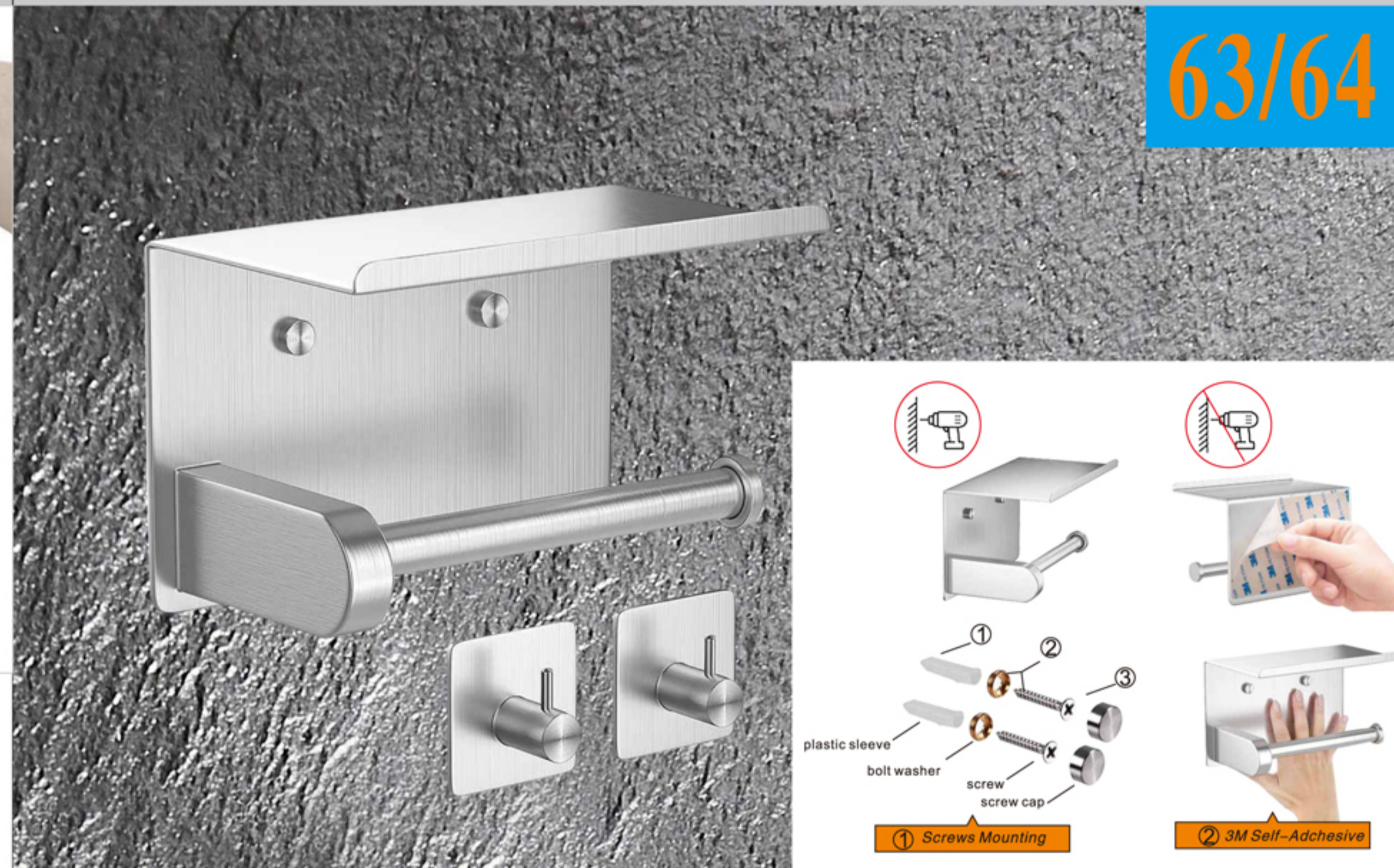
精选SUS304不锈钢
S304 STAINLESS STEEL IS SELECTED AS RAW MATERIAL.



Suit product series



6188
双用纸巾架
Dual use paper towel holder



6064
厕纸架/Toilet paper rack



6076
厕纸架/Toilet paper rack



6077
厕纸架/Toilet paper rack



6102
厕纸架/Toilet paper rack



6105
厕纸架/Toilet paper rack



6106
厕纸架/Toilet paper rack



108
暗装厕纸架/Toilet paper rack



115
暗装厕纸架/Toilet paper rack



116
暗装厕纸架/Toilet paper rack



117
纸巾盒
paper towel holder



118
双纸巾盒
paper towel holder



119
厕纸架/Toilet paper rack



6092
纸巾架 (小) 143x100x97cm
paper towel holder (small)



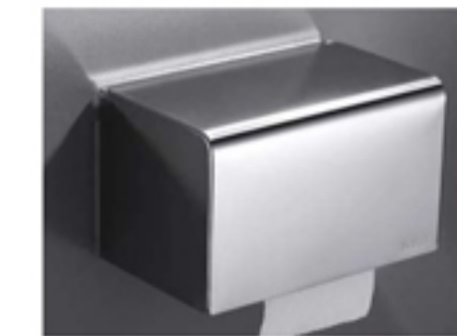
6093
纸巾架 (大) 164x120x122cm
paper towel holder (large)



120
双厕纸架/Toilet paper rack



6094
纸巾盒 160cm
paper towel holder



6095
纸巾盒 200cm
paper towel holder



121
双厕纸架/Toilet paper rack



6083
双层置物篮/Double storage basket



6039
双层置物篮/Double storage basket



6013
吹风机架/Blower frame



6014
双吹风机架/Row of hooks



6158
晾衣绳/Clothesline



6159
晾衣绳/Clothesline



6160
晾衣绳/Clothesline



6161
皂液器/soap dispenser



6162
皂液器/soap dispenser



(30cm/40cm/50cm/60cm/70cm/80cm/90cm/100cm)
6044 (∅ 25) (∅ 32)
扶手/Handrail



6032
网篮/Net basket



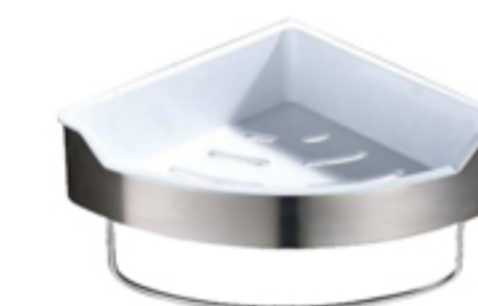
6033
网篮/Net basket



6060
板篮/Board basket



6041
板篮/Board basket



6041-A
带杆板篮/Take pole plate basket



6090
板篮/Board basket



6062
板篮/Board basket



6089
网篮/Net basket



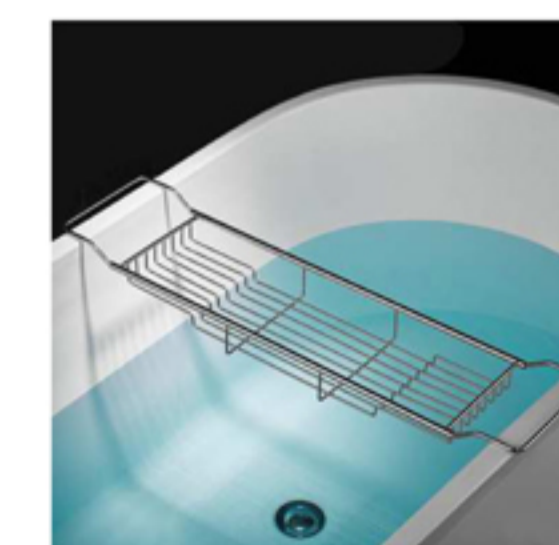
6040
板篮/Board basket



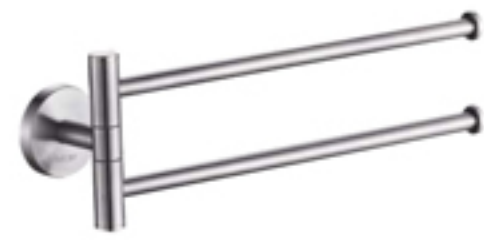
6088
板篮/Board basket



6036
置物篮/Storage basket



6037
置物篮/Storage basket



6109
活动杆/Portable bar



6110
活动杆/Portable bar



(35cm/45cm/55cm/65cm/75cm)
6054
单杆/Single pole



6042
毛巾环/Towel ring



6043
毛巾环/Towel ring



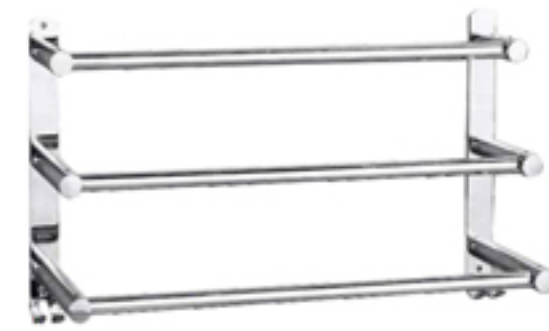
6073
三层毛巾架/Triple towel rack



6钩48cm
8钩48cm
10钩58cm
12钩68cm
14钩78cm
6021
排钩/Row of hooks



6钩49cm
8钩49cm
10钩59cm
12钩69cm
14钩79cm
6022
免钉排钩/Row of hooks



6074
带钩三层毛巾架/
Three-layer towel rack with hook



6134
矮挂墙马桶刷/
Low wall toilet brush



6135
高挂墙马桶刷/
High wall toilet brush



6137
矮落地马桶刷/
Low floor toilet brush



6136
高落地马桶刷/
High floor toilet brush



67/68



1601(6034)
小衣钩/Clothes hook



1602(6035)
大衣钩/Clothes hook



1603
衣钩/Clothes hook



1607 (6062)
衣钩/Clothes hook



1608 (6063)
衣钩/Clothes hook



1609
衣钩/Clothes hook



1605
双衣钩/Clothes hook



1611
衣钩/Clothes hook



6107
隐形衣钩/Clothes hook



6108
双隐形衣钩/Double clothes hook



1606
衣钩/Clothes hook



1206
双衣钩/Clothes hook



1206A
双衣钩/Clothes hook



1205
衣钩/Clothes hook



7006A
双衣钩/Clothes hook



6006A
双衣钩/Clothes hook



6006
衣钩/Clothes hook



1613
衣钩/Clothes hook



1615
衣钩/Clothes hook



1616
衣钩/Clothes hook



8306
衣钩/Clothes hook



9506
衣钩/Clothes hook



8106
衣钩/Clothes hook



8106A
双衣钩/Clothes hook



9306
衣钩/Clothes hook



9906A
双衣钩/Clothes hook



7006
双衣钩/Clothes hook



1614
衣钩/Clothes hook



1617
双衣钩/Clothes hook



1619
双衣钩/Clothes hook



8006A
双衣钩/Clothes hook



8006
衣钩/Clothes hook



9106
衣钩/Clothes hook



1620
双衣钩/Clothes hook



8406A
衣钩/Clothes hook



8906
双衣钩/Clothes hook



3006
衣钩/Clothes hook



2006
衣钩/Clothes hook



9206
双衣钩/Clothes hook



1706
双衣钩/Clothes hook



1622
双衣钩/Clothes hook



8206A
双衣钩/Clothes hook



8806
衣钩/Clothes hook



5006
衣钩/Clothes hook



8506
衣钩/Clothes hook



8506A
双衣钩/Clothes hook



8206
衣钩/Clothes hook



9006
衣钩/Clothes hook



9006A
衣钩/Clothes hook



8406
衣钩/Clothes hook



1806
双衣钩/Clothes hook



6606
衣钩/Clothes hook



9706
衣钩/Clothes hook



9806A
双衣钩/Clothes hook



9806
衣钩/Clothes hook



9905
衣钩/Clothes hook



9906
双衣钩/Clothes hook



1405
衣钩/Clothes hook



1406
双衣钩/Clothes hook



1506
衣钩/Clothes hook



1305
衣钩/Clothes hook



1306A
双衣钩/Clothes hook



1306
双衣钩/Clothes hook



6006B
双衣钩/Clothes hook



1621
衣钩/Clothes hook



1626
衣钩/Clothes hook



6706
衣钩/Clothes hook



1627
衣钩/Clothes hook



1618
衣钩/Clothes hook



8706
双衣钩/Clothes hook



6101
衣钩/Clothes hook



9906
双衣钩/Clothes hook



1623
衣钩/Clothes hook



9606
衣钩/Clothes hook



1906
衣钩/Clothes hook



6506
双衣钩/Clothes hook



9095
衣钩/Clothes hook



9096
排钩/row hook



9097
排钩/row hook



6098
衣钩/Clothes hook



6099
排钩/row hook



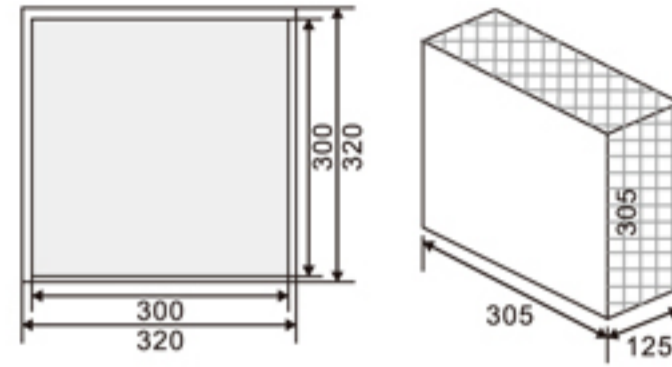
6100
排钩/row hook

精选SUS304不锈钢
S304 STAINLESS STEEL IS SELECTED AS RAW MATERIAL.

Suit product series
 拉丝金 Brushed gold 镜面 Mirror color 拉丝 Brushed color 黑色 black 白色 White 枪灰 Gun gray



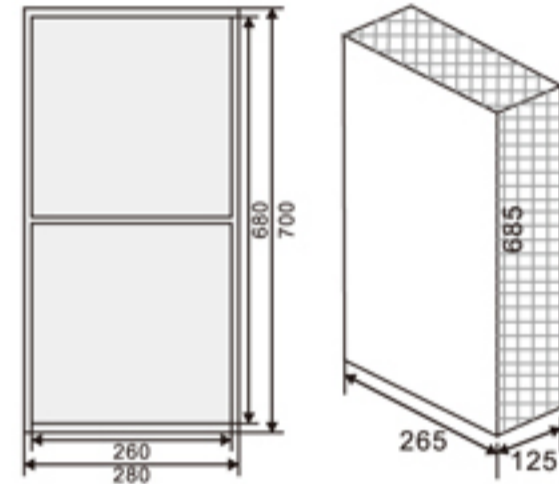
101
壁龛/niche



壁龛尺寸: 320×320×125mm
开孔尺寸: 305×305×125mm



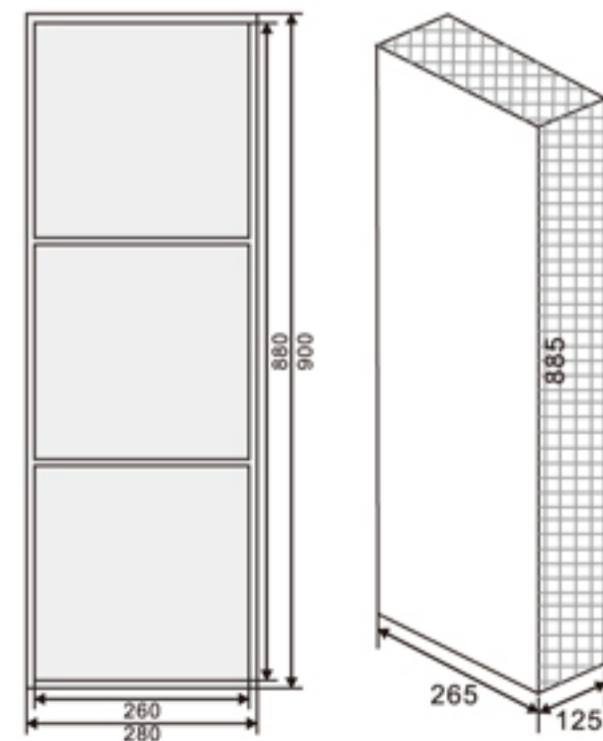
102
壁龛/niche



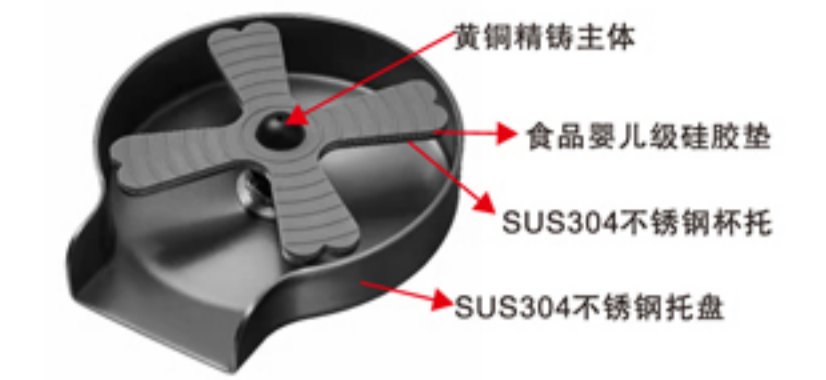
壁龛尺寸: 700×280×125mm
开孔尺寸: 685×265×125mm



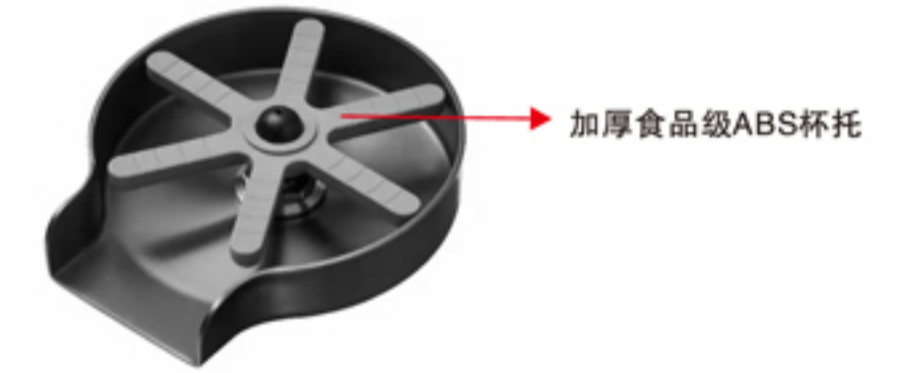
103
壁龛/niche



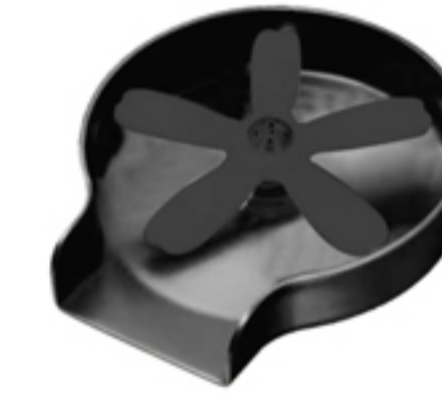
壁龛尺寸: 900×280×125mm
开孔尺寸: 885×265×125mm



.....除了杯托不同, 其他都相同.....



130
洗杯器/Cup washer



131
洗杯器/Cup washer



132
洗杯器/Cup washer



133
洗杯器/Cup washer



134
置物架/rack



135
置物架/rack