



10,000m²

Company Profile And Culture

FINIO , INC. a professional enterprise engaged in the research, production, and sales of valves, sanitary ware, water meters, pipes, fittings, bathroom accessories, kitchen and bathroom hardware, etc.

The head office has multiple factories, branches and offices, covering a total area of 150 mu ,with a standardized workshop area of 100000 square meters, and currently employs more than 700 people.

The company advocates people-oriented, pragmatic, innovative, professional, and enterprising philosophy, focusing on the intelligent bathroom field, relying on high-quality research and development teams, high-end research and development laboratories, and focusing on product differentiation research and development, The company has successively passed ISO9001,CE,CQC and other product and enterprise management certifications, adhering to the spirit of diligence and dedication.and striving to create a first-class intelligent bathroom brand in China

PIPES AND FITTINGS SERIES



NINGBO FINIO SANITARY WARE CO.,LTD

ADD:NO.218-26 WANGSHAN ROAD,JINGBEI DIST,NINGBO,CHINA 315000

TEL:+86-574-87151980 FAX:+86-574-87151980

EMAIL:info@finio.cn WEB:www.finio.cn

可靠的质量保证 Reliable quality assurance

Finio has imported advanced material physical and chemical analysis equipment from Europe and the United States since 2001. It has purchased internationally-esteemed testing machines used for valves, faucets, hoses, durability, fluidity, tempt, tension and burst, metallographic analyzers, 58 sets of complete mechanical & physical testing equipment or checking assembly line, and 26 units of standard machines.

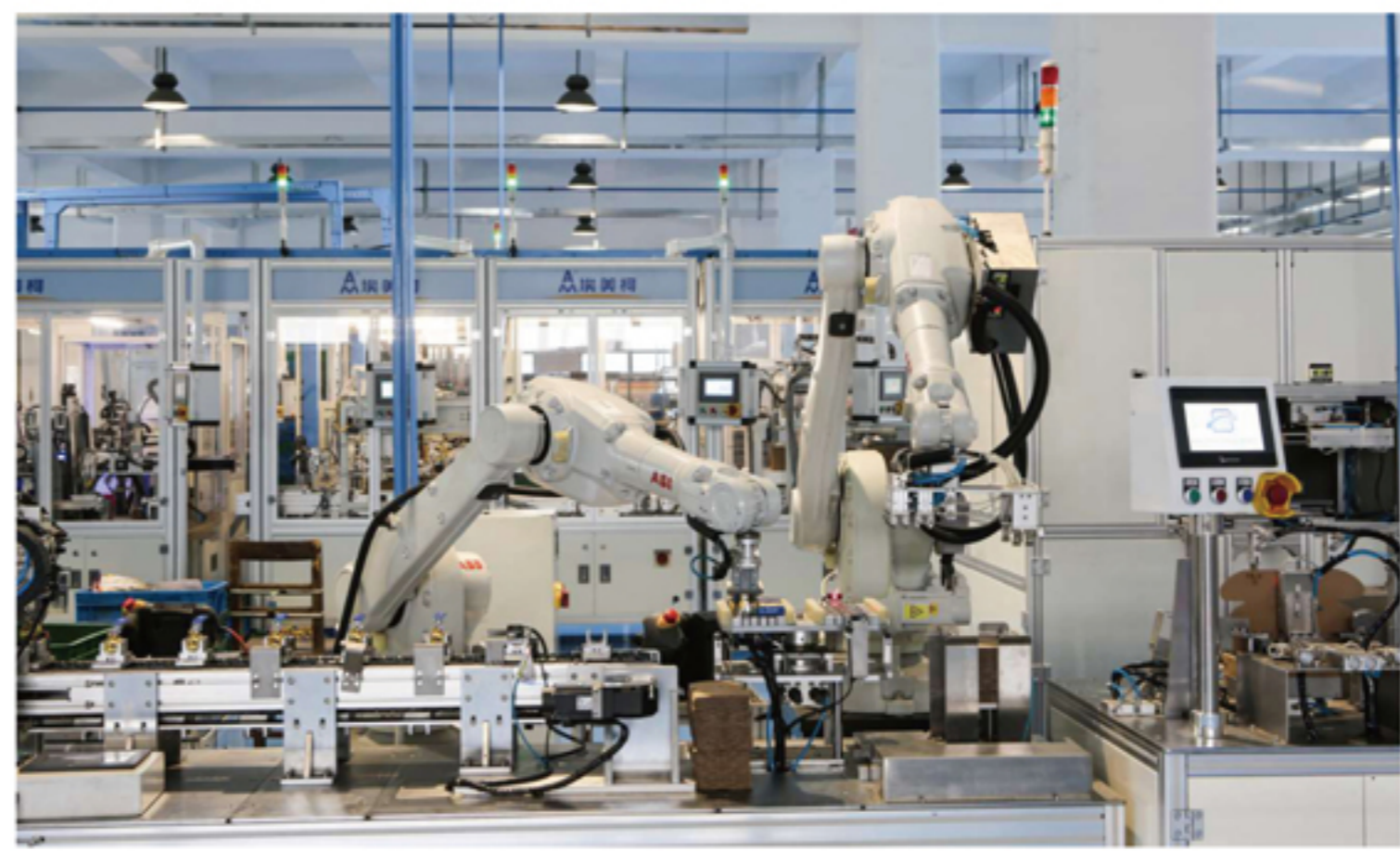
As early as the year of 1994, FINIO had acquired the ISO 9000 serial Certification for Quality Management System and strictly compiled the whole set of process control procedure documents in the process of material procurement, designing, manufacturing, performance testing, and packaging etc. In 2001, the Group not only obtained the ISO 9001 Certification for Quality Management System and the ISO 14001 Certification for Environmental Management System, but also acquired the Australian AS/NZS 3688, AS/NZS 3718, AS 5830.1, and EU's CE Quality Certification with 100% qualification ratio of ex-work products and 100% qualification ratio of export commodity inspection. In 2012, FINIO was acclaimed as the first batch of Demonstration Enterprise for Exports' Safety and Quality by Entry-exit Inspection & Quarantine Bureau of Ningbo City. In October 2010, FINIO's testing center was praised and accredited by China National Accreditation Service for Conformity Assessment, which is affirmation for FINIO's testing capability.



The first class equipments 一流的生产设备

"A handy tool makes a handy man", as it says, the integration management of Industrialization & Informatization, and Intellectualization Equipment can guarantee modern production requirements. Recently, FINIO strived to undertake the technology upgrading, including equipment investment and intelligent unmanned workshops, which preliminarily paved the way for large-scale Intellectualization.

In order to enlarge production, form industrial chains, and promote FINIO, the Modern Industrial Town was inaugurated in 2006. Meanwhile, we had invested a large sum of money in technical upgrading, which replaced old manufacturing equipments and changed into new production models. All these efforts facilitated industrial upgrading and restructuring in order to enhance our competitiveness.



铜管性能与特点

铜管作为住宅的给水管材，它具有集金属管材与非金属管材优点于一身，在给水管系统中独占鳌头。但长期以来，铜在我国被视为控制物质而限制使用。因而在给水管材中被中断使用四、五十年，近十几年才恢复，从而揭开了铜水管神秘面纱。使用铜管有诸多好处：

使用寿命长：

铜水管的寿命可以说与建筑物同寿命，北京协和医院20年代安装的水暖件，历经70多年的沧桑，至今依然性能良好，上海外滩高层建筑当时安装的铜水管现仍在正常使用。一次安装，终身享受。

节能增源：

铜管由于内壁光滑，流阻小，不会结垢、生锈。

卫生健康：

铜可以说是“具有绿色面孔的红色金属”。铜管不像镀锌铁管或化学管材那样易造成饮用水的二次污染，铜管能抑制细菌生长，保持饮用水清洁卫生。生物学研究表明，供水中的大肠杆菌在铜管道内不能在继续繁殖；99% 以上的水中细菌在进入铜管道5小时后自行消失。这是由于微量的铜溶于水而形成的。据世界卫生组织（WHO）确认：铜是人体组织进行正常活动不可缺少的元素。成人体内100-150mg铜，是造血的必要物质。

不可渗透性：

铜管及配件坚固密实。铜的表面形成一层坚硬密实的保护层，无论是油脂，细菌和病毒，氧气，有害液体或紫外线都不能穿过它，也不能浸蚀它而污染水质，尤其是铜管与管件用焊接连接，牢固密封，这是塑料管道不能做到的。



铜管管道热伸长量

表1

管段长度 l (m)	铜管的热伸长量 Δl (mm)									
	热 水 温 度 (°C)									
	60	65	70	75	80	85	90	95	100	
1	1.3	1.4	1.5	1.6	1.7	1.8	1.9	2.0	2.1	
5	6.5	7	7.5	8	8.5	9	9.5	10	10.5	
10	13	14	15	16	17	18	19	20	21	
15	19.5	21	22.5	24	25.5	27	28.5	30	31.5	
20	26	28	30	32	34	36	38	40	42	
25	32.5	35	37.5	40	42.5	45	47.5	50	52.5	
30	39	42	45	48	51	54	57	60	63	
35	45.5	49	52.5	56	59.5	63	66.5	70	73.5	
40	52	56	60	64	68	72	76	80	84	
45	58.5	63	67.5	72	76.5	81	85.5	90	94.5	
50	65	70	75	80	85	90	95	100	105	
55	71.5	77	82.5	88	93.5	99	104.5	110	115.5	
60	78	84	90	96	102	108	114	120	126	

金属管道的热伸长量按下述公式计算

$$\Delta l = a (t_1 - t_2) l$$

式中 Δl—管道的热伸长量 (mm)

l—计算管段长度 (m)

t₁—管道中热水最高温度 (°C)

t₂—安装管道时周围的空气温度

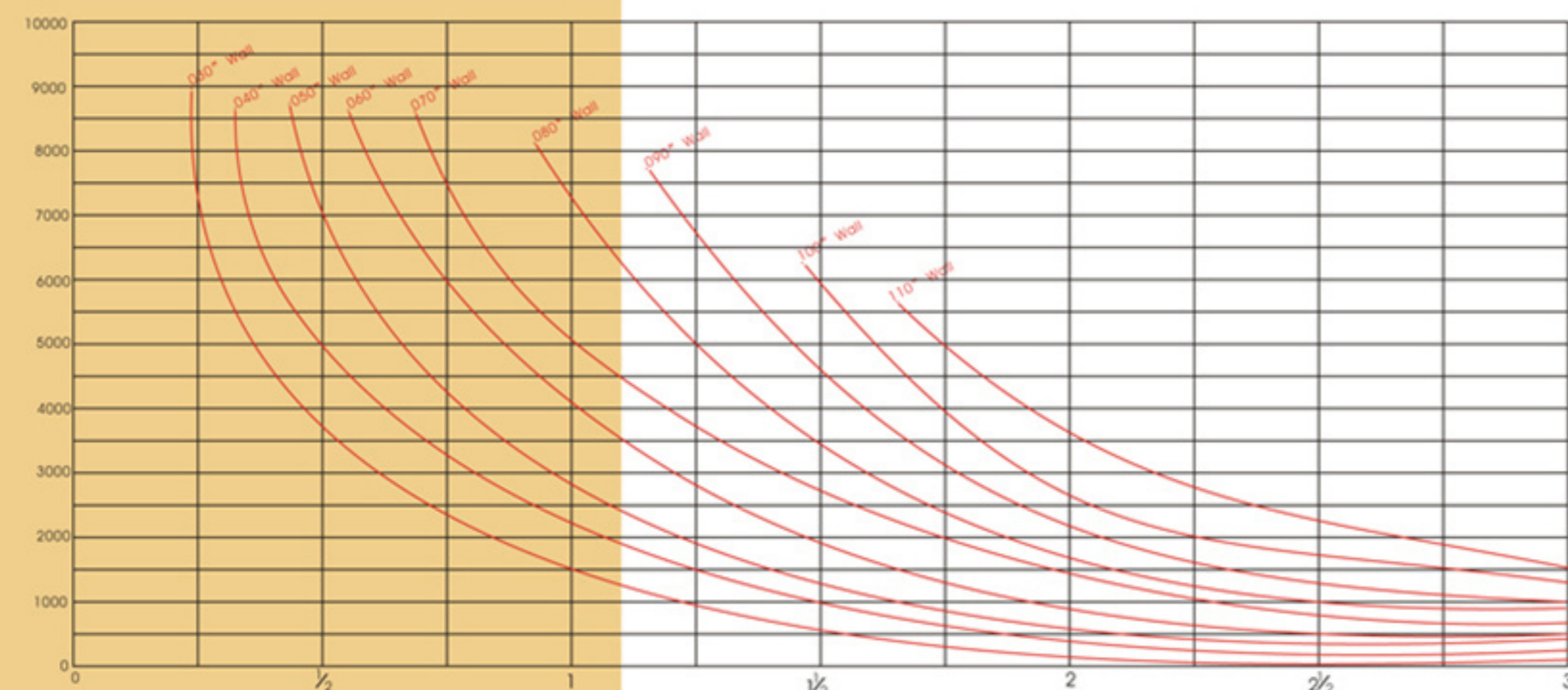
安装在室内时 t₂ = -5°C

a—金属的线膨胀系数 (mm/m/°C) :

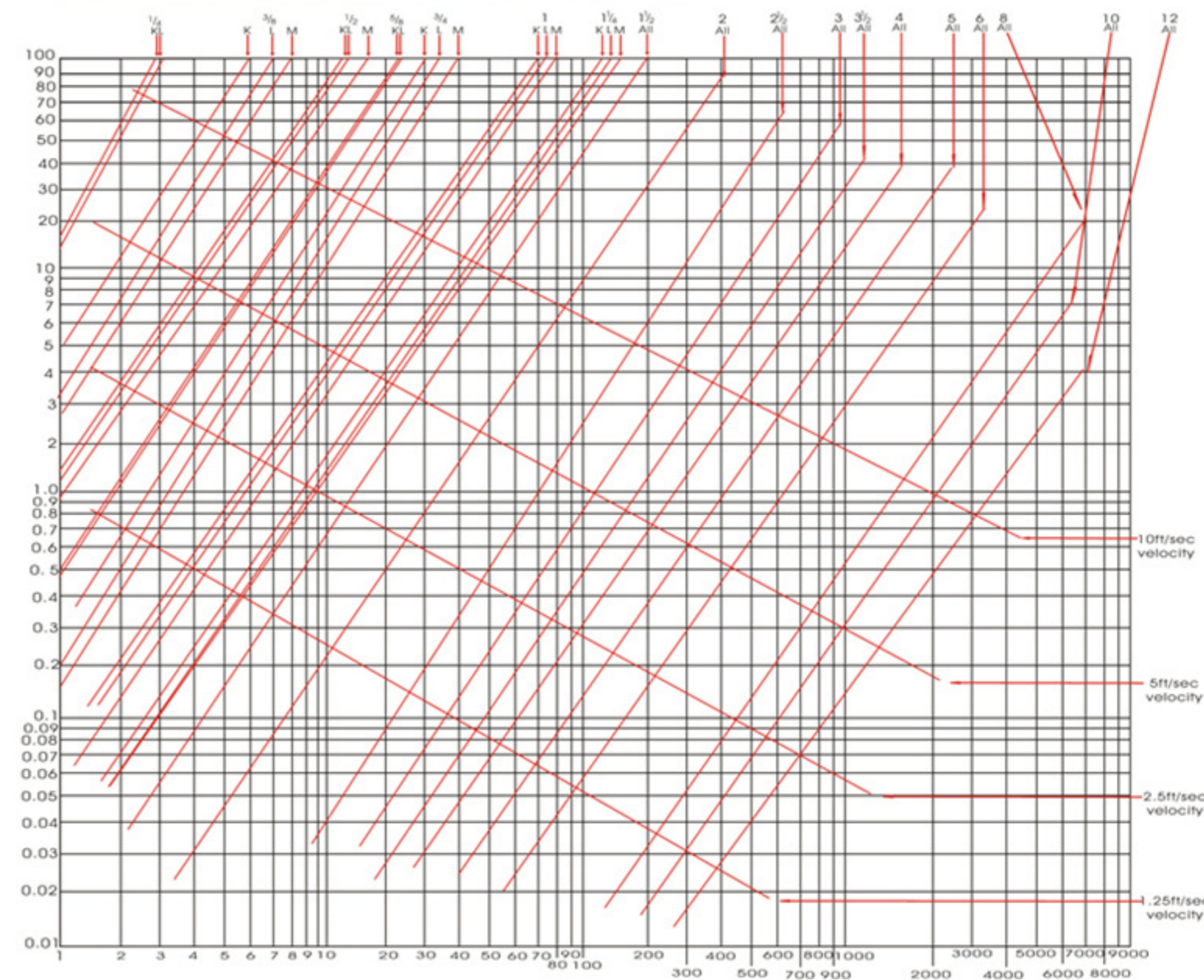
铜管取0.02

根据公式计算后制成的表1可直接查用。

铜管压力衰减表

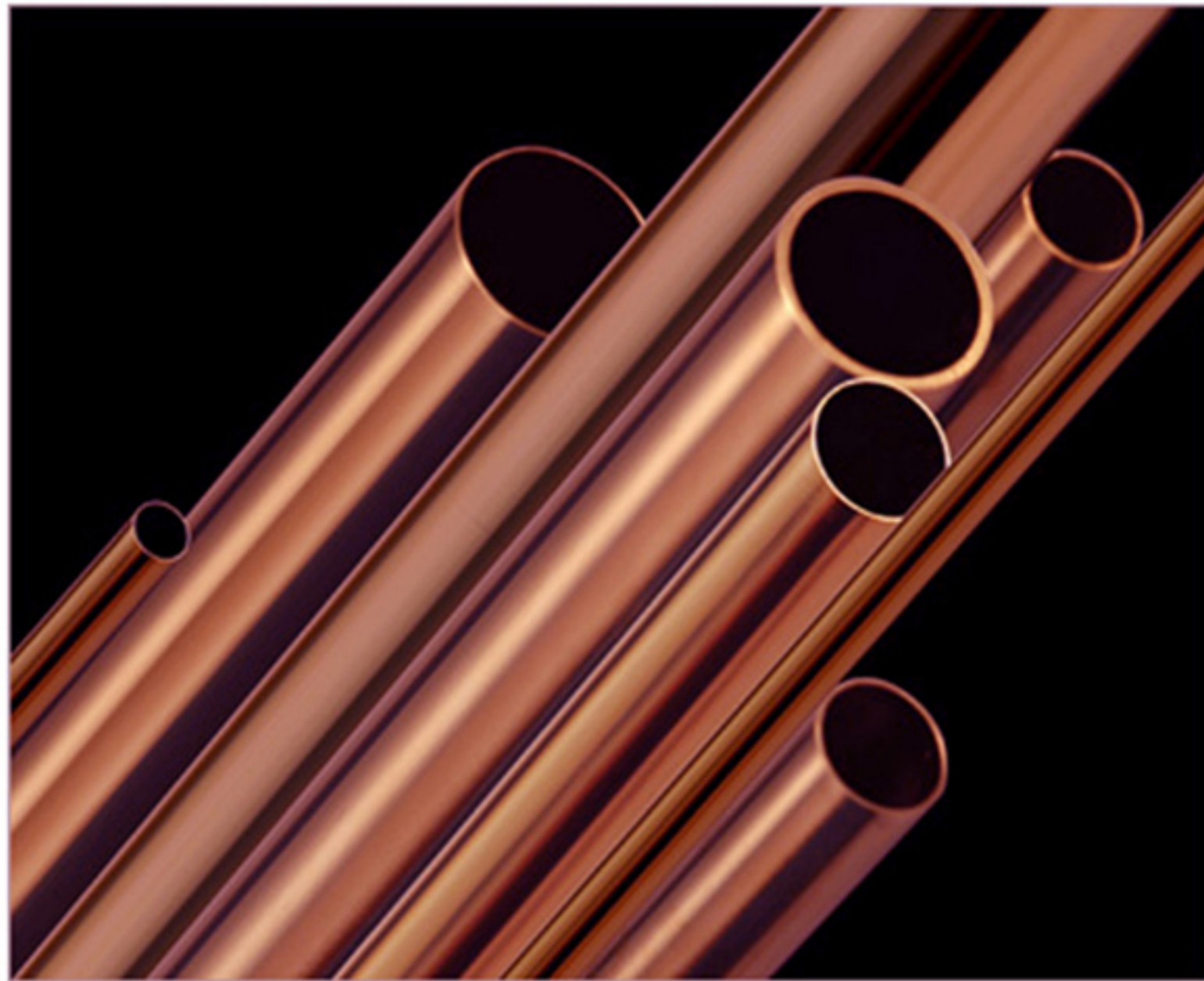


铜管内水流的压力损失和流速表



铜管的直径和物理性能：

名义或标准尺寸, 英寸	名义直径, 英寸			计算值 (以名义直径为基础)				
	外径	内径	壁厚	内径横截面积平方英寸	管的重量磅/每英尺长	管和水的重量磅/每英尺长	管的容积立方英尺	每英尺长加仑
1/4	.375	.305	.035	.073	.145	.177	.00051	.00379
3/8	.500	.402	.049	.127	.269	.324	.00088	.00660
1/2	.625	.527	.049	.218	.344	.438	.00151	.0113
5/8	.750	.625	.049	.334	.418	.562	.00232	.00660
3/4	.875	.745	.065	.436	.641	.829	.00303	.0227
1	1.125	.995	.065	.778	.839	1.18	.00540	.0404
1 1/4	1.375	1.245	.065	1.22	1.04	1.57	.00847	.0634
1 1/2	1.625	1.481	.072	1.72	1.36	2.10	.0119	.0894
2	2.125	1.959	.083	3.01	2.06	3.36	.0209	.156
2 1/2	2.625	2.435	.095	4.66	2.93	4.94	.0324	.242
3	3.125	2.907	.109	6.64	4.00	6.87	.0461	.345
3 1/2	3.625	3.385	.120	9.00	5.12	9.01	.0625	.468
4	4.125	3.857	.134	11.7	6.51	11.6	.0813	.608
5	5.125	4.805	.160	18.1	9.67	17.5	.126	.940
6	6.125	5.741	.192	25.9	13.9	25.1	.180	1.35
8	8.125	7.583	.271	45.2	25.9	45.4	.314	2.35
10	10.125	9.449	.338	70.1	40.3	70.6	.487	3.64
12	12.125	11.315	.405	101	57.8	101	.701	5.25



Copper Pipe

Copper Soldering Fittings

Copper Pipe in Plastic Coating

铜管件工艺及试验压力

参 数 系 列	类 别 Material	加 工 工 艺 Technolog	试 验 压 力 (MPa) Testing Pressure		使 用 压 力 (MPa) Using Pressure
			空 气 Air	水 Water	
黄铜管件 Brass Pipe Fitting	HPb60-2	热 锻 Forged	0.6	2.4	1.6
	ZCuZn40pb2	铸 造 Casted	0.6	2.4	1.6
紫铜管件 Copper Pipe Fitting	T2 TP2 TU2	挤 压 成 形 Pressure	0.6	2.4	1.6

技术参数

材 料 Material	公 称 压 力 Nominal pressure	工 作 温 度 Working temperature	适 用 介 质 Suitable medium
铜管 Copper tube	(MPa)	°C	海水、蒸汽、冷水、热水、氧气、空气、天然气、液化石油气、氟利昂12、氟利昂22及一切适用于铜管的介质。
T2 TP2 TU2	1.6	<150	Sea water, steam, coldwater, hot water oxygen, air, natural gas, liquefied petroleum gas Freon12, Freon22 and any other media that suit for copper tube.

紫铜管选用标准（推荐）

公称直径 DN		企业标准Q/AM1828-2009		欧洲标准EN1057-1996		国家标准 GB/T1527-2006 GB/T18033-2007	
英制 (in)	公制 (mm)	外径 (mm)	壁厚 (mm)	外径 (mm)	壁厚 (mm)	外径 (mm)	壁厚 (mm)
3/8	10	12	0.8	12	0.6	12	1.0
1/2	15	15	1.0	15	0.7	15	1.0
3/4	20	22	1.0	22	0.9	22	1.5
1	25	28	1.2	28	0.9	28	1.5
1 1/4	32	35	1.2	35	1.2	35	1.5
1 1/2	40	42	1.5	42	1.2	42	2.0
2	50	54	1.5	54	1.2	54	2.0
2 1/2	65	67	2.0	66.7	1.5	67	2.5
3	80	76	2.0	76.1	1.8	89	2.5
4	100	108	2.5	108	2.0	108	2.5
5	125	133	2.5	133	2.0	133	3.0
6	150	159	3.0	159	2.5	159	3.5
8	200	219	4.0	219	3.0	219	4.5

注：特殊规格，按用户要求制造。

欧洲标准: EN1057-1996

规格:12 15 22 28 35 42 54 67 76 108 133 159 219

国家标准: GB/T1527-2006 GB/T18033-2007

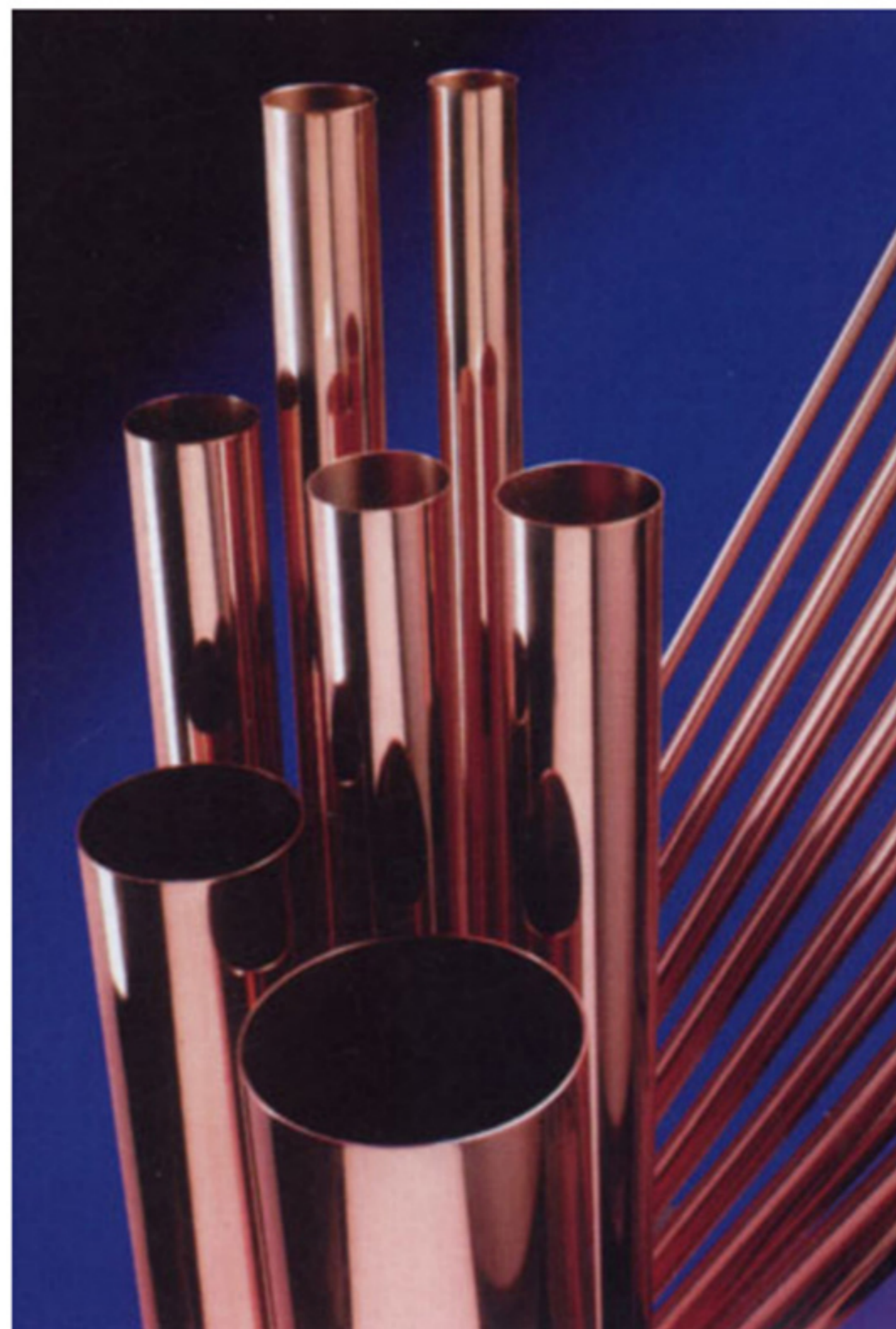
规格:12 15 22 28 35 42 54 67 89 108 133 159 219

企业标准: Q/AM1828-2009

规格:12 15 22 28 35 42 54 67 76 108 133 159 219

紫铜管理论计算重量

品种 公称尺寸 DN/mm	焊接, 卡套, 冷热水紫铜管						螺纹连接紫铜管						
	企业标准 Q/AM1202-2008			国家标准 GB/T1527-2006 GB/T18033-2007			欧洲标准 EN1057-1996			国家标准 GB/T1527-2006			
	外径 mm	壁厚 mm	每米 公斤	外径 mm	壁厚 mm	每米 公斤	外径 mm	壁厚 mm	每米 公斤	管螺纹	外径 mm	壁厚 mm	每米 公斤
10	12	0.8	0.25	12	1.0	0.31	12	0.6	0.2	3/8			
15	15	1.0	0.4	15	1.0	0.4	15	0.7	0.29	1/2	21.5	2.75	1.45
20	22	1.0	0.59	22	1.5	0.87	22	0.9	0.54	3/4	27	2.75	1.87
25	28	1.2	0.91	28	1.5	1.12	28	0.9	0.69	1	34	3.25	2.8
32	35	1.2	1.14	35	1.5	1.41	35	1.2	1.14	1 1/4	42	3.25	3.53
40	42	1.5	1.71	42	2.0	2.25	42	1.2	1.38	1 1/2	48	3.5	4.37
50	54	1.5	2.21	54	2.0	2.92	54	1.2	1.78	2	60	3.5	5.54
65	67	2.0	3.65	67	2.5	4.53	66.7	1.5	2.76	2 1/2	76	3.75	7.59
80	76	2.0	4.15	89	2.5	6.07	76.1	1.8	3.74	3	89	4	9.53
100	108	2.5	7.41	108	2.5	7.41	108	2.0	5.94	4	114	4	12.33
125	133	2.5	9.16	133	3.0	10.93	133	2.0	7.34				
150	159	3.0	13.11	159	3.5	15.28	159	2.5	10.96				
200	219	4.0	24.1	219	4.5	27.03	219	3.0	18.15				



塑覆紫铜管规格

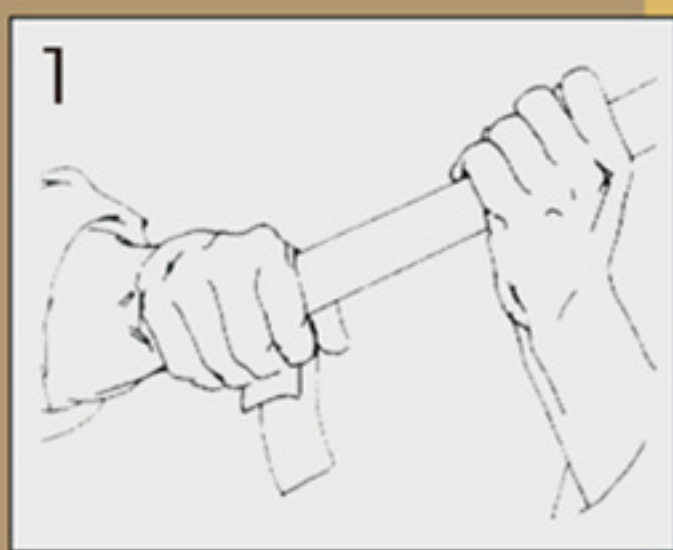
公称直径 DN	铜管外径 mm	铜管厚度 mm
15	15	0.7~1.0
20	22	0.8~1.0
25	28	0.9~1.2
32	35	1.0~1.5
40	42	1.0~1.5
50	54	1.5~2.0

注：执行标准：Q/AM1202-2008

Copper Pipe

Copper Soldering Fittings Copper Pipe in Plastic Coating

紫铜管与紫铜配件焊接步骤



1、表面擦洗:

紫铜管插入紫铜配件部分的表面,不得有任何种类的油脂、氧化物、污渍和灰尘,否则会严重影响钎料对母材的焊接性能,产生缺陷。因此,表面应用汽油或其它有机溶剂擦洗。医疗气体用管,严禁用油类溶剂擦洗,可用四氯化碳(CCl₄)擦洗。



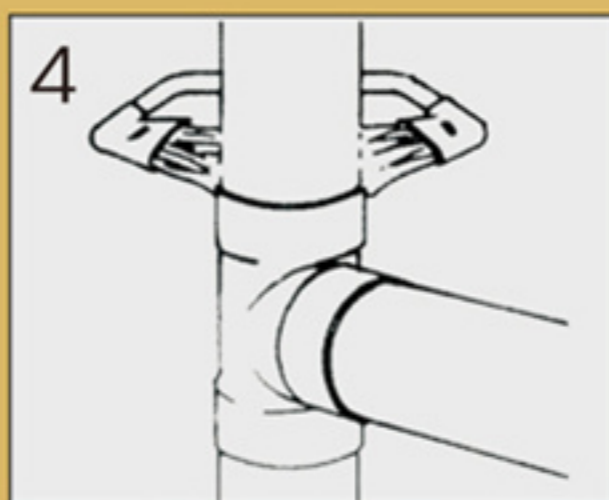
2、清洁端部:

紫铜配件一般是没有污垢的,若有可用铜丝刷或钢丝刷处理端部,不可用其它不清洁的用具进行处理。



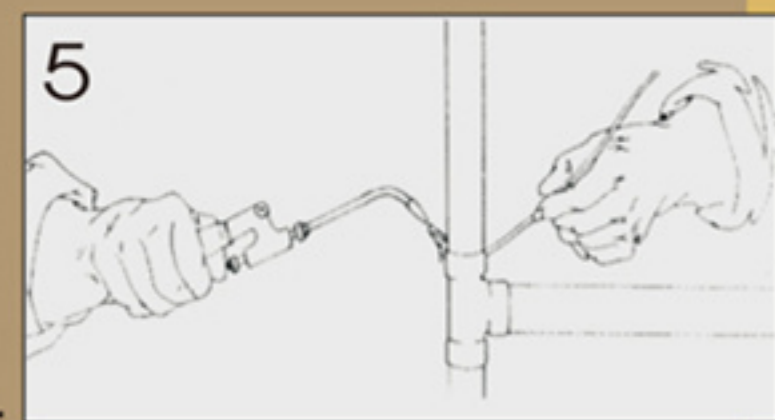
3、预热:

用氧乙炔加热时,用外焰进行加热,火焰应呈中性或略带还原性。加热时焊炬沿紫铜管作环向转动,使之均匀加热。



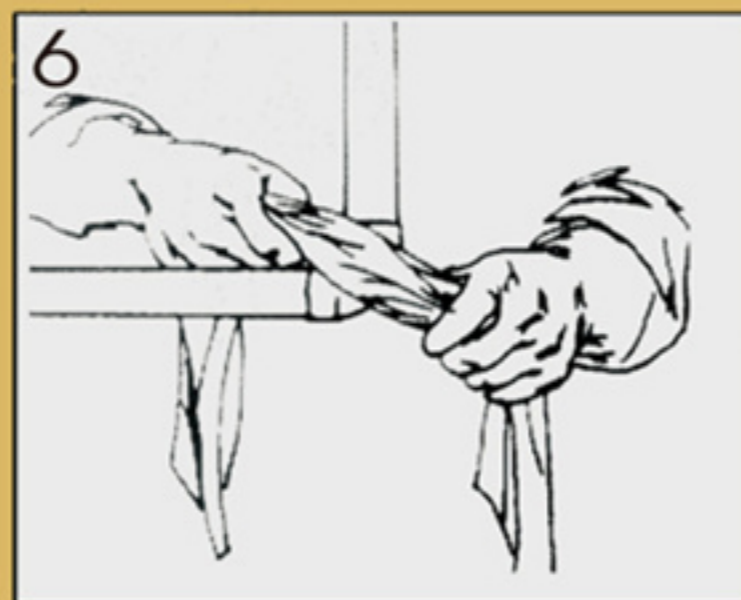
4、均匀加热:

当紫铜管直径加大时,可同时用2-3个焊炬同时加热,加热的基本方法与(3)相同。一般预热至紫铜管呈暗色为宜。



5、焊接:

均匀加热被焊接件,用加热的钎料沾取适量钎剂(焊粉)均匀抹在缝隙,当温度达650—750度时送入钎料。切勿将火焰直接加热钎料,由于毛细管作用和润湿作用能使熔化后的液态钎料在缝内渗透,当钎料全部熔化时停止加热。否则钎料会不断地往里渗透,不能形成饱满的焊角。

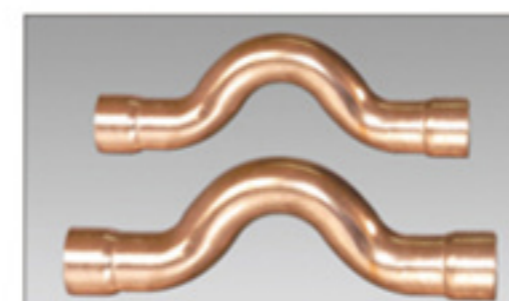


6、焊后处理:

结束间隔几分钟后,用湿布拭擦连接部分。这样,既可稳定焊接部分,又可以去掉焊接面上的熔渣,以防腐蚀。焊接后正常的焊缝应无气孔,裂纹和未熔合等缺陷。

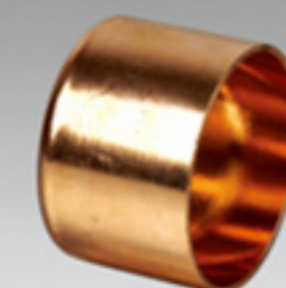
紫铜管焊接配件

Copper pipe, copper soldering fittings



C-604
564紫铜过桥弯管
COPPER TUBE

规格: 15 22 28



C-620(C)
管帽

规格: 15 22 28 35 42 54
67 76 108



C-609(CXCXCXC)
承口四通

规格: 15 22 28 35 42 54
67 76 108



C-614(CXCXCXC)
承口异径四通

规格: 15X 22X 28X 35X
42X 54X 67X 76X
108X



C-610(CXCXC)
承口三通
EQUAL TEE

规格: 15 22 28 35 42 54 67 76
108 133 159 219



C-611(CXCXC)
承口异径三通
REDUCING TEE

规格: 22X 28X 35X 42X 54X 67X
76X 108X 133X 159X 219X



C-612(CXC)
承口接头
STRAIGHT COUPLING

规格: 15 22 28 35 42 54 67 76
108 133 159 219



C-613(CXC)
承口异径外接头
REDUCING COUPLING

规格: 15X 22X 28X 35X 42X 54X
67X 76X 108X 133X 159X
219X



C-615(CXC)
插承口异径接头
REDUCING COUPLING

规格: 15X 22X 28X 35X 42X 54X
67X 76X 108X 133X 159X
219X



C-616(CXC)
45° 承口弯头
45° EQUAL ELBOW

规格: 15X 22X 28X 35X 42X 54X
67X 76X 108X 133X 159X
219X



C-618(CXC)
90° 承口弯头
90° EQUAL ELBOW

规格: 15 22 28 35 42 54 67 76
108 133 159 219

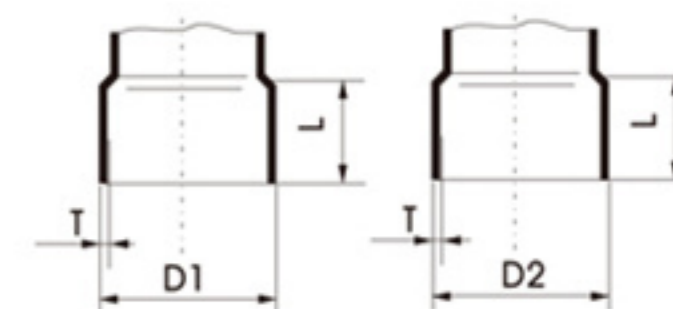


C-619(CXC)
90° 承口异径弯头
90° REDUCING ELBOW

规格: 15X 22X 28X 35X 42X 54X
67X 76X 108X 133X 159X
219X

公称通径 DN	铜管外径 DW	承口内径D1		插口外径D2		承插口长度 L	壁厚 T
		MAX	MIN	MAX	MIN		
15	15	15.30	15.06	15.05	14.85	10.60	0.7
20	22	22.30	22.07	22.05	21.85	15.40	1.00
25	28	28.30	28.07	28.05	27.85	18.40	1.00
32	35	35.30	35.09	35.05	34.85	23.00	1.10
40	42	42.30	42.09	42.05	41.85	27.00	1.20
50	54	54.30	54.09	54.05	43.85	32.00	1.20
65	67	67.30	67.09	67.05	66.85	33.50	1.60
80	76	76.53	76.20	76.05	75.85	33.50	1.60
100	108	108.50	108.10	108.05	107.80	38.00	2.00
125	133	134.00	133.30	133.00	132.50	40.00	2.20
150	159	160.00	159.30	159.00	158.40	40.00	2.50
200	219	220.20	219.30	219.00	218.20	45.00	3.00

紫铜管焊接配件承插口尺寸



注:特殊要求请在定货合同中加入说明

螺纹和卡套连接铜合金管道配件

Threaded and compression copper alloy fittings

 <p>LK-624 90° 内螺纹卡套弯头 90° FEMALE COMPRESSION ELBOW 规格: 1/2X15 3/4X22 1X28 1/4X35</p>	 <p>LK-625 90° 外螺纹卡套弯头 90° MALE COMPRESSION ELBOW 规格: 1/2X15 3/4X22 1X28 1/4X35</p>	 <p>K-626 90° 卡套弯头 90° COMPRESSION ELBOW 规格: 15 22 28 35</p>	 <p>K-627 90° 卡套异径弯头 90° COMPRESSION REDUCING ELBOW 规格: 22X15 28X15 28X22 35X22 35X28</p>
 <p>K-641 卡套接头 COMPRESSION COUPLING 规格: 15X15 22X22 28X28 35X35</p>	 <p>K-642 卡套异径接头 COMPRESSION REDUCING COUPLING 规格: 22X15 28X15 28X22 35X22 35X28</p>	 <p>LK-643 外螺纹卡套接头 MALE COMPRESSION NIPPLE 规格: 1/2X15 3/4X22 1X28 1/4X35</p>	 <p>LK-644 内螺纹卡套接头 FEMALE COMPRESSION NIPPLE 规格: 1/2X15 3/4X22 1X28 1/4X35</p>
 <p>K-653 卡套三通 COMPRESSION EQUAL TEE 规格: 15 22 28 35</p>	 <p>K-654 卡套异径三通 COMPRESSION REDUCING TEE 规格: 22X15 28X15 28X22 35X22 35X28</p>	 <p>KL-657 卡套内螺纹三通接头 FEMAL COMPRESSION TEE NIPPLE 规格: 15X1/2X15 22X1/2X22 22X3/4X22 28X1/2X28 28X3/4X28 28X1X28</p>	 <p>660 外螺纹接管接头 MALE PIPE ADAPTER 规格: 1/2</p>

安装示意图



紫铜管连接



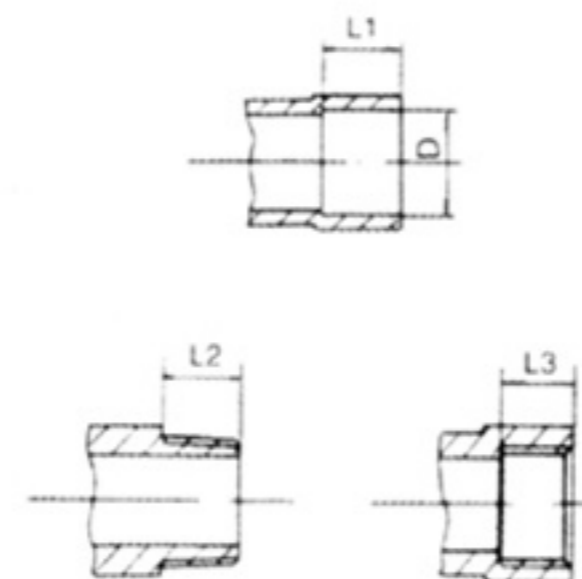
覆塑紫铜管连接

螺纹和承口连接铜合金管道配件

Threaded and compression copper alloy fittings

 <p>LC-621 90° 外螺纹承口弯头 90° MALE EQUAL ELBOW 规格: 1/2X15 3/4X22 1X28 1/4X35 1/2X42 2X54 2/2X67 3X76 4X108</p>	 <p>LC-622 90° 内螺纹承口弯头 90° FEMALE EQUAL ELBOW 规格: 1/2X15 3/4X22 1X28 1/4X35 1/2X42 2X54 2/2X67 3X76 4X108</p>	 <p>L-623 90° 内螺纹弯头 90° FEMALE EQUAL ELBOW 规格: 1/2 3/4 1 1/4 1/2 2 2/2 3 4</p>	 <p>L-628 90° 内螺纹异径弯头 90° FEMALE REDUCING ELBOW 规格: 1/2X 3/4X 1X 1/4X 1/2X 2X 2/2X 3X 4X</p>
 <p>L-649 内螺纹三通 FEMALE TEE 规格: 1/2 3/4 1 1/4 1/2 2 2/2 3 4</p>	 <p>L-650 内螺纹异径三通 FEMALE REDUCING TEE 规格: 1/2X 3/4X 1X 1/4X 1/2X 2X 2/2X 3X 4X</p>	 <p>L-651 内螺纹四通 FEMALE CROSS 规格: 1/2 3/4 1 1/4 1/2 2 2/2 3 4</p>	 <p>LC-652 内螺纹承口三通 FEMALE EQUAL TEE 规格: 1/2X15 3/4X22 1X28 1/4X35 1/2X42 2X54 2/2X67 3X76 4X108</p>
 <p>LC-655 内螺纹承口异径三通 FEMALE REDUCING TEE 规格: 1/2X22 3/4X15 1X15 1X22 1/4X22 1/4X28 1/2X28 1/2X35 2X35 2X42 2/2X42 2/2X54 3X54 3X67 4X67 4X76</p>	 <p>L-659 内螺纹活接头 FEMALE UNION 规格: 1/2 3/4 1 1/4 1/2 2 2/2 3 4</p>	 <p>L-661 外螺纹活接头 MALE UNION 规格: 1/2 3/4 1 1/4 1/2 2 2/2 3 4</p>	 <p>L-662 内外螺纹等径活接头 MALE&FEMALE UNION 规格: 1/2 3/4 1 1/4 1/2 2 2/2 3 4</p>

黄铜管件接头螺纹长度及承口尺寸



公称通径 (DN)	相应管螺纹 (in)	承口尺寸			外螺纹长度 (L ₂)	内螺纹长度 (L ₃)
		MAX	MIN	L ₁		
15	1/2	15.35	15.10	11	11	11
20	3/4	22.35	22.10	16	12	13
25	1	28.35	28.10	19	13	15
32	1 1/4	35.35	35.10	23	16	19
40	1 1/2	42.35	42.10	27	16	19
50	2	54.35	54.10	32	21	23
65	2 1/2	67.40	67.10	34	23	26
80	3	76.55	76.20	41	26	29
100	4	108.50	108.10	44	32	35

螺纹和承口连接铜合金管道配件

Threaded and solder copper alloy fittings



LC-663

内螺纹承口活接头
FEMALE EQUAL UNION
规格: 1/2X15 3/4X22 1X28
1/4X35 1/2X42 2X54
2/2X67 3X76 4X108



LC-664

外螺纹承口活接头
MALE EQUAL UNION
规格: 1/2X15 3/4X22 1X28
1/4X35 1/2X42 2X54
2/2X67 3X76 4X108



C-665

承口活接头
EQUAL BUSHING
规格: 15 22 28 35 42 54 67
76 108 133 159



L-680

内螺纹接头
FEMALE COUPLING
规格: 1/2 3/4 1 1/4 1/2 2 2/2
3 4



L-681

外螺纹接头
MALE NIPPLE
规格: 1/2 3/4 1 1/4 1/2 2 2/2
3 4



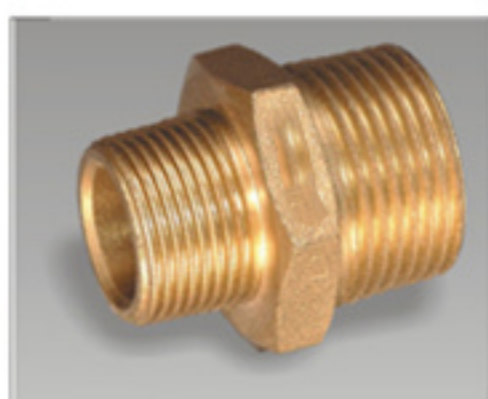
L-682

内外螺纹接头
MALE&FEMALE BUSHING
规格: 1/2 3/4 1 1/4 1/2 2 2/2
3 4



L-683

内螺纹异径接头
FEMALE REDUCING COUPLING
规格: 1/2X 3/4X 1X 1/4X 1/2X
2X 2/2X 3X 4X



L-684

外螺纹异径接头
MALE REDUCING NIPPLE
规格: 1/2X 3/4X 1X 1/4X 1/2X
2X 2/2X 3X 4X



L-685

内外螺纹异径接头
MALE&FEMALE NIPPLE REDUCING
规格: 1/2X 3/4X 1X 1/4X 1/2X
2X 2/2X 3X 4X



L-686

内螺纹承口接头
FEMALE ADAPTER
规格: 1/2X15 3/4X22 1X28
1/4X35 1/2X42 2X54
2/2X67 3X76 4X108



LC-687

外螺纹承口接头
MALE ADAPTER
规格: 1/2X15 3/4X22 1X28
1/4X35 1/2X42 2X54
2/2X67 3X76 4X108



LC-688

外螺纹插口接头
MALE COUPLING
规格: 1/2X15 3/4X22 1X28
1/4X35 1/2X42 2X54
2/2X67 3X76 4X108



L-690

45° 内螺纹弯头
45° FEMALE ELBOW
规格: 1/2 3/4 1 1/4 1/2 2 2/2
3 4



L-691

45° 内外螺纹弯头
45° MALE&FEMALE ELBOW
规格: 1/2 3/4 1 1/4 1/2 2 2/2
3 4



L-692

90° 内外螺纹弯头
90° MALE&FEMALE ELBOW
规格: 1/2 3/4 1 1/4 1/2 2 2/2
3 4

螺纹和承口连接铜合金管道配件

Threaded and solder copper alloy fittings



LF-671

外螺纹全铜法兰
FULL COPPER MALE FLANGE
规格: 1/2 3/4 1 1/4 1/2 2 2/2
3 4



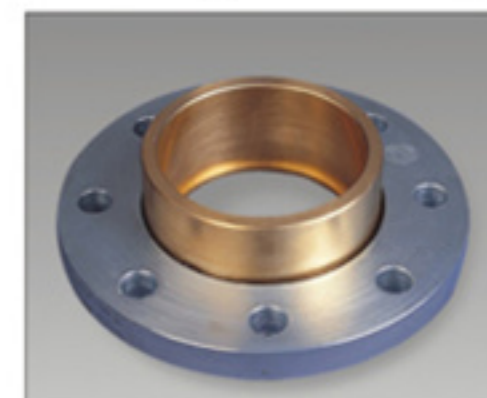
LF-672

外螺纹铜衬钢法兰
COPPER-PLATED FEMALE STEEL FLANGE
规格: 1/2 3/4 1 1/4 1/2 2 2/2
3 4



LF-673

内螺纹铜衬钢法兰
COPPER-PLATED FEMALE STEEL FLANGE
规格: 1/2 3/4 1 1/4 1/2 2 2/2
3 4



CF-674

承口铜衬钢法兰
COPPER-PLATED STEEL FLANGE
规格: 15 22 28 35 42 54 67
76 108 133 159 219



CF-675

承口全铜法兰
FULL COPPER EQUAL STEEL FLANGE
规格: 15 22 28 35 42 54 67
76 108 133 159



F-676

法兰异径接头
FLANGED REDUCER
规格: 54X 67X 76X 108X 133X
159X



F-677

45° 法兰弯头
45° FLANGED ELBOW
规格: 54 67 76 108 133 159



F-678

90° 法兰弯头
90° FLANGED ELBOW
规格: 54 67 76 108 133 159



F-679

法兰三通
FLANGED TEE
规格: 54 67 76 108 133 159



698吊环

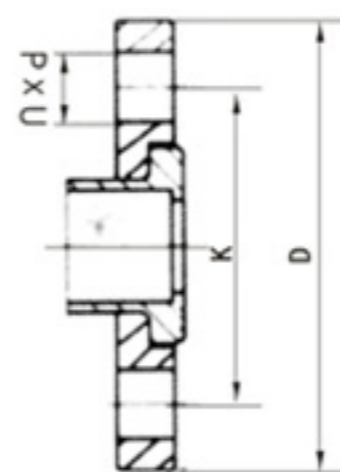
SUSPEND RING
规格: 15 22 28 35 42 54 67
76 108 133 15



699壁环

WALL RING
规格: 15 22 28 35 42 54 67
76 108 133 15

法兰连接尺寸(PN16)



规格 (DN)	D	K	螺栓孔 (nxd)
15	95	65	4-φ14
20	105	75	4-φ14
25	115	85	4-φ14
32	140	100	4-φ18
40	150	110	4-φ18
50	165	125	4-φ18
65	185	145	4-φ18
80	200	160	8-φ18
100	220	180	8-φ18
125	250	210	8-φ18
150	285	240	8-φ22
200	340	295	12-φ22